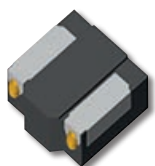


# FLAT AND EFFICIENT SMD POWER CHOKES– HC SERIES



**The new ABC HC Series** are high efficient chokes with focus on lowest copper loss by using a flat enamelled copper wire with  $\alpha$ -winding as well as lowest core loss by applying a special metal alloy on iron power base with partly amorphous structure.

## Features:

- Special core material consist of metal alloy on iron powder base with partly amorphous structure
- Magnetically shielded for optimal EMC
- Value range 0.47 ... 4.7  $\mu$ H
- Extremely low DCR by using flat copper wire with  $\alpha$ -winding
- Optimised for high continuous current (low temperature rise)
- Wide terminals for optimal connection
- Semi- automatic manufacturing for best quality and flexibility

## Applications:

- DC/DC converter in consumer and industrial electronics
- Portable devices
- Applications that require a flat case

## Service:

- Datasheets under [www.endrich.com](http://www.endrich.com)
- Cross Reference and layout comparison available
- Free of charge samples on request
- 3D Model, Spice data downloadable

	SIZE (MM)	HC0312	HC0412	HC0512	HC0612
<b>A</b>		3.4 ± 0.2	4.4 ± 0.2	5.4 ± 0.2	7.1 ± 0.2
<b>B</b>		3.1 ± 0.2	4.1 ± 0.2	5.1 ± 0.2	6.7 ± 0.2
<b>C</b>		1.6 ref.	2.0 ref.	2.50 ref.	3.00 ref.
<b>D</b>		1.2 max.	1.2 max.	1.2 max.	1.2 max.
<b>E</b>		0.95 ± 0.1	1.1 ± 0.1	1.2 ± 0.1	1.65 ± 0.1

