



Semi-Shielded SMD Power Inductor  
TPI2410 Series



**INTRODUCTION**

The TPI series are characterized by low profile, and high current power inductor used in cellular phone, HDD, DVC, DSC, PDA, LCD display, and other electronic equipment. Several dimensions are available.

**FEATURES**

- Small and low profile inductor.
- High current performance.
- High magnetic shield construction should actualize high resolution.
- Available for automatic mounting in tape and reel package.

**PART NUMBER**

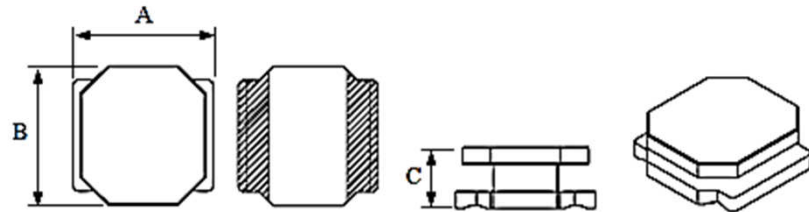
TPI 2410 C T 1R0 N - □□

---

1    2    3    4    5    6

**1** Product Type

**2** Shape & Dimension



| Size    | A                              | B                              | C                         |
|---------|--------------------------------|--------------------------------|---------------------------|
| TPI2410 | (0.095 ± 0.004)<br>2.40 ± 0.10 | (0.095 ± 0.004)<br>2.40 ± 0.10 | (0.039 max.)<br>1.00 max. |

(inch)  
mm

**3** Coating Type

C : Coating

**4** Inductance

R68 = 0.68uH    1R0 = 1.0uH    100 = 10uH

**5** Tolerance

M = ±20%    N = ±30%

**6** Internal Code

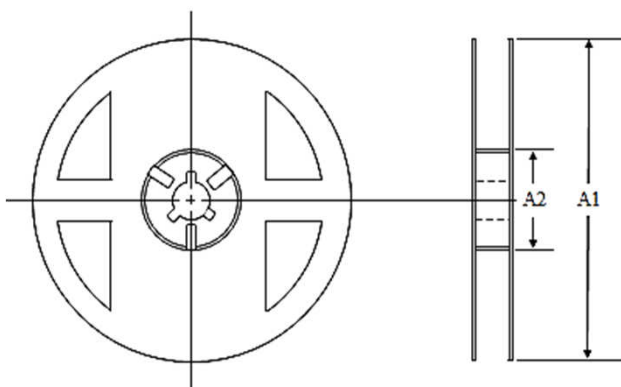
## TPI2410 Series

| Part No.           | Inductance (uH) | Test Freq. | Tolerance | DC Resistance (mΩ) |      | Rated DC Current (A) |      |
|--------------------|-----------------|------------|-----------|--------------------|------|----------------------|------|
|                    |                 |            |           | Max.               | Typ. | Idc1                 | Idc2 |
| TPI2410CT R68 □-□□ | 0.68            | 100KHz, 1V | N         | 78                 | 60   | 2.60                 | 2.50 |
| TPI2410CT 1R0 □-□□ | 1.0             | 100KHz, 1V | N         | 91                 | 70   | 2.00                 | 1.90 |
| TPI2410CT 1R5 □-□□ | 1.5             | 100KHz, 1V | M         | 132                | 110  | 1.50                 | 1.50 |
| TPI2410CT 2R2 □-□□ | 2.2             | 100KHz, 1V | M         | 168                | 140  | 1.30                 | 1.20 |
| TPI2410CT 3R3 □-□□ | 3.3             | 100KHz, 1V | M         | 264                | 220  | 1.05                 | 1.00 |
| TPI2410CT 4R7 □-□□ | 4.7             | 100KHz, 1V | M         | 348                | 290  | 0.92                 | 0.90 |
| TPI2410CT 6R8 □-□□ | 6.8             | 100KHz, 1V | M         | 492                | 410  | 0.75                 | 0.65 |
| TPI2410CT 100 □-□□ | 10              | 100KHz, 1V | M         | 828                | 690  | 0.60                 | 0.55 |
| TPI2410CT 150 □-□□ | 15              | 100KHz, 1V | M         | 1224               | 1020 | 0.50                 | 0.45 |
| TPI2410CT 220 □-□□ | 22              | 100KHz, 1V | M         | 1764               | 1470 | 0.40                 | 0.40 |

1. Inductance is measured in HP-4285A Precision LCR Meter.
2. RDC is measured in HP 4338B milliohm meter or equivalent.
3. Tolerance : M = ±20%, N = ±30% (Table shows stock tolerance in □).
4. Idc1 : Based on inductance change ( $\Delta L/L_0 : \leq -30\%$ ).
5. Idc2 : Based on temperature rise ( $\Delta T : 40^\circ\text{C typ.}$ ).

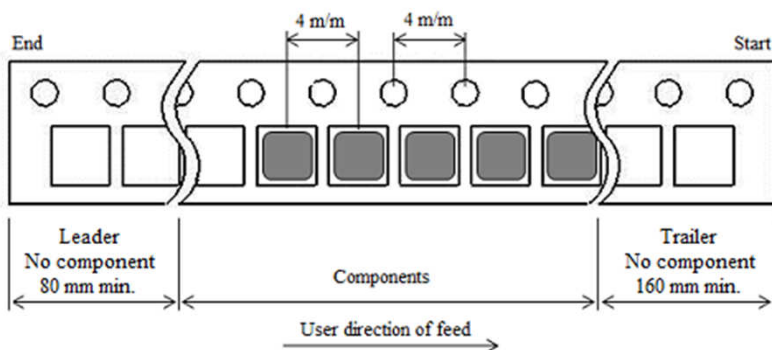
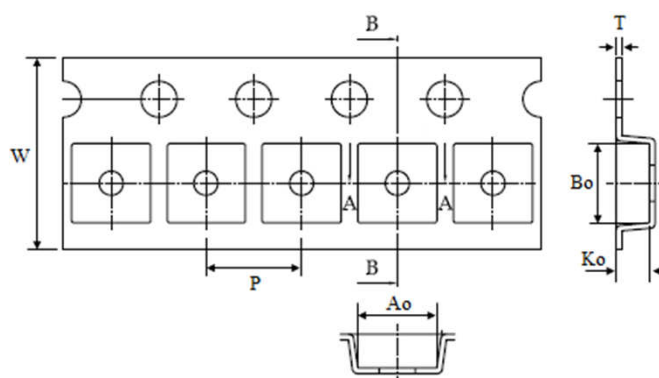
(unit : m/m)

| Type | Pcs/Reel | Reel" | A1  | A2 |
|------|----------|-------|-----|----|
| 2410 | 2,000    | 7"    | 178 | 60 |



(unit : m/m)

| Type           | 2410 |      |
|----------------|------|------|
| Chip Cavity    | Ao   | 2.75 |
|                | Bo   | 2.75 |
| Insert Pitch   | P    | 4.00 |
| Tape Thickness | Ko   | 1.30 |
|                | T    | 0.23 |
| Tape Width     | W    | 8.00 |



Recommended Footprint (unit : m/m)

| Type | A    | B    | C    |
|------|------|------|------|
| 2410 | 2.15 | 2.00 | 0.70 |

Recommended Pattern

