

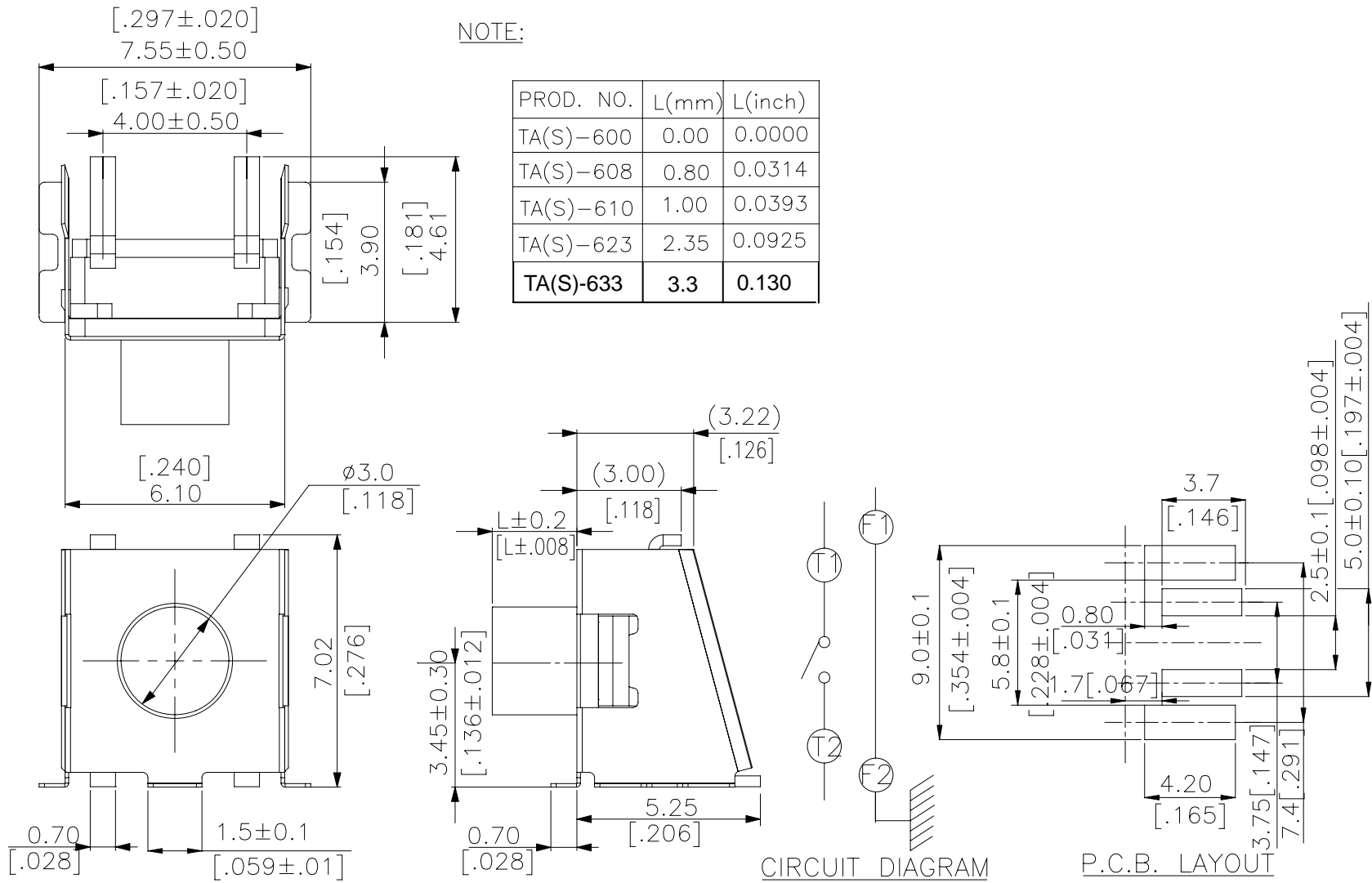


TA(S)-6 SERIES



DIMENSIONS

TA(S)-6



General Tolerance : ±0.2mm

HOW TO ORDER

TA - 6 - -

Package Style:
 T/R=Tape & Reel
 = Bulk Pack

Soldering:
 V = Lead Free Solderable

Operating Force :
 N = Brown, 180gf
 R = Red, 260gf

Stem Height :
 00 = 0 mm
 08 = 0.8 mm
 10 = 1.0 mm
 23 = 2.35 mm
 33 = 3.30mm

Prod. Series :
 S = With Support Terminal
 = Without Support Terminal

SPECIFICATION

△MECHANICAL

- *Operation Force: 260 ± 70gf (RED), 180 ± 50gf (Brown)
- *Stop Strength: Max. 3kgf vertical static load continuously for 15 seconds.
- *Stroke: 0.45 ± 0.2mm
- *Operation Temperature: -25°C to +70°C
- *Storage Temperature: -30°C to +80°C

△ELECTRICAL

- Electrical Life: 500,000 cycles min. for 260gf, 180gf
- Rating: 50mA , 12VDC
- Contact Resistance: 100mΩ max.
- Insulation Resistance: 100MΩ min. at 500VDC
- Dielectric Strength: 250VAC/1 minute
- Contact Arrangement: 1 pole 1 throw

MATERIAL

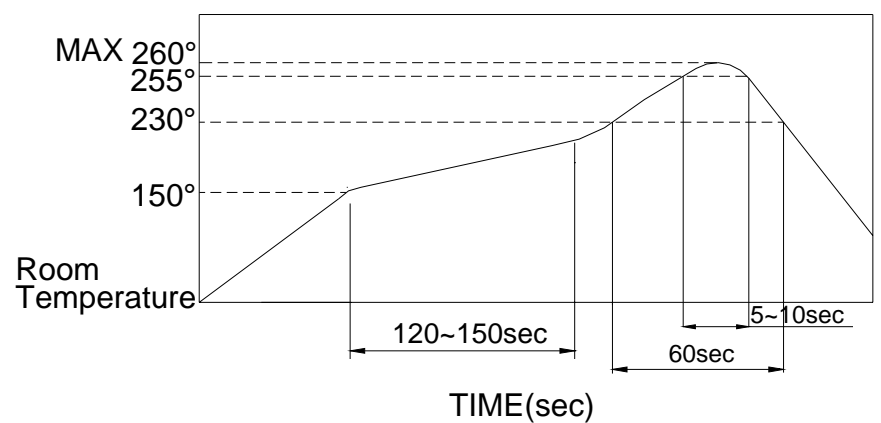
- △COVER: Nickel silver.
- △STEM: Silicone rubber (Red / Brown)
- △TERMINAL: Brass with silver plated.
Color: Black
- △CONTACT: Phosphor bronze with silver cladding

SOLDERING PROCESS

△HAND SOLDERING: Use a soldering iron of 30 watts, controlled at 350°C approximately max 5 seconds.

△SOLDERING: Vapor phase & reflow soldering can be applied.

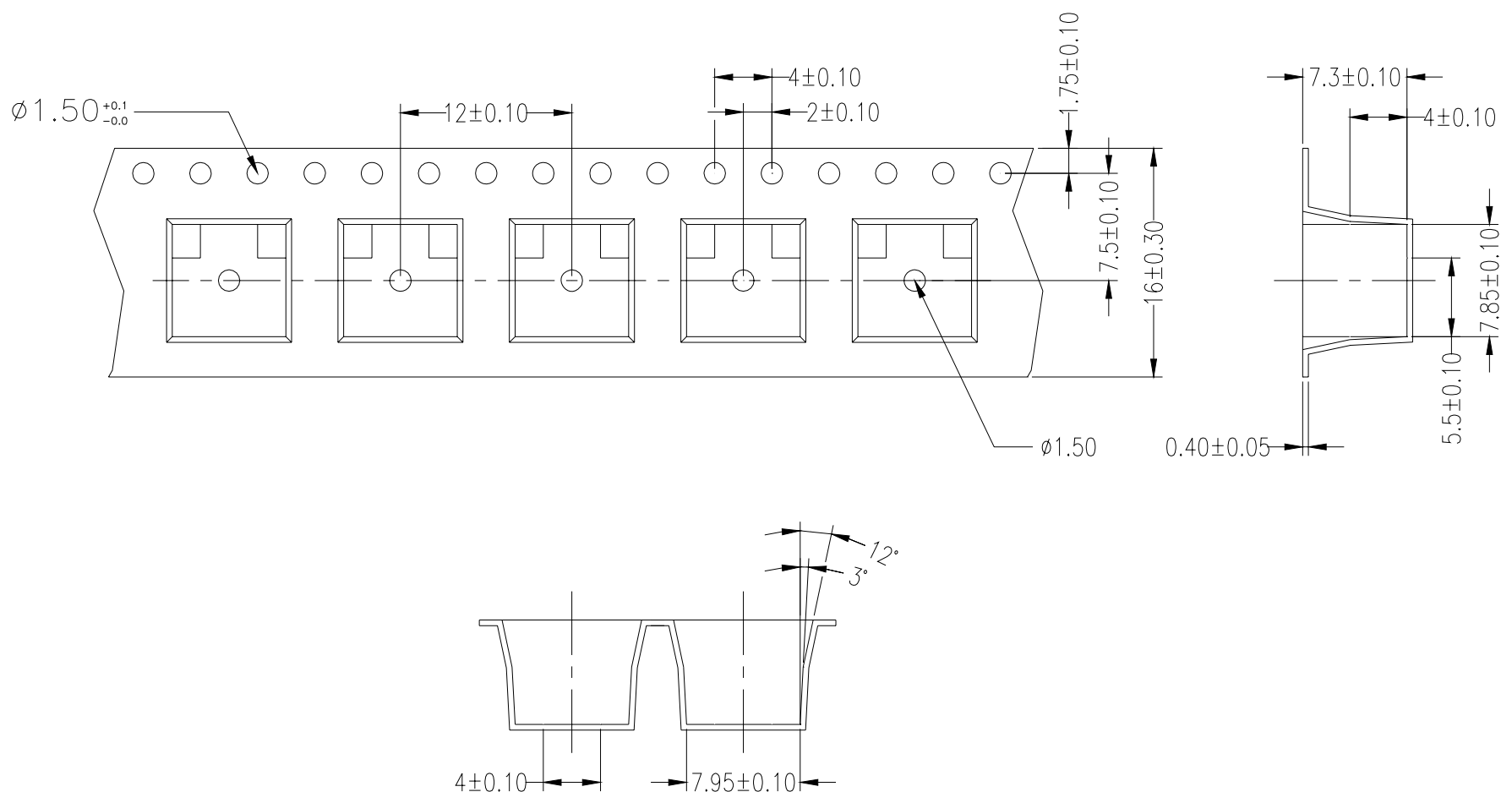
△Reflow Temperature Profile:



PACKING

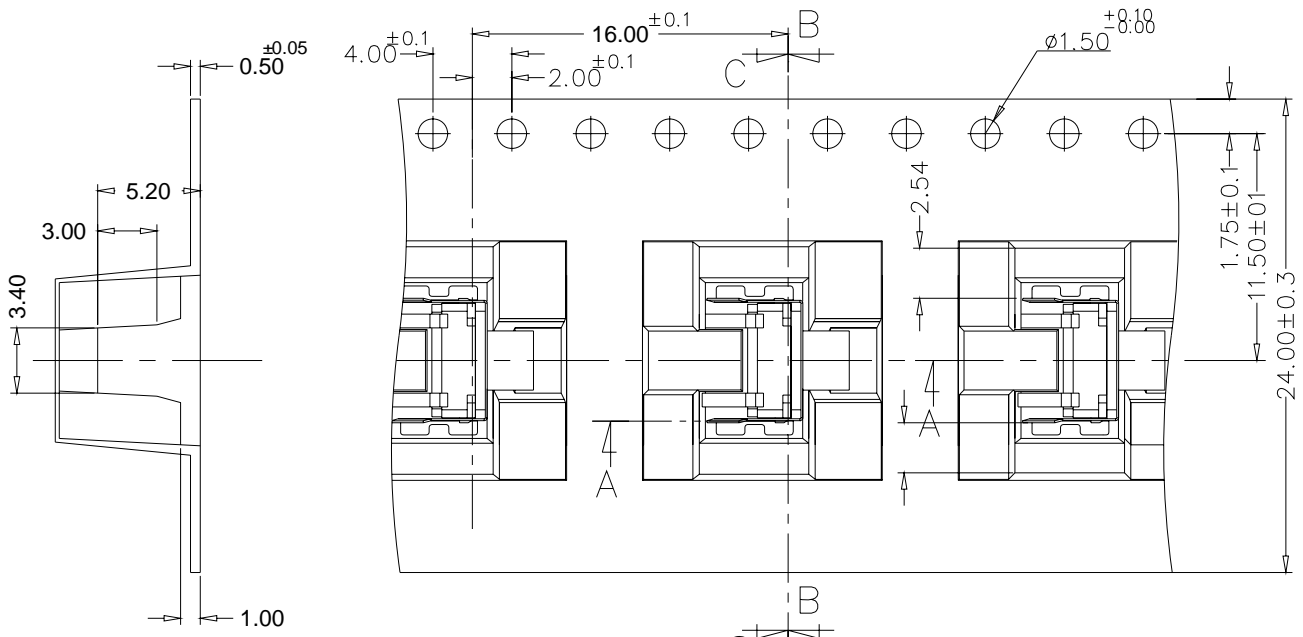
Part Number	Number Per Reel	Number Per Bag
TA(S)-600	700	500
TA(S)-608	700	500
TA(S)-610	700	500
TA(S)-623	700	500
TA(S)-633	600	500

TA(S)-600~623 REEL



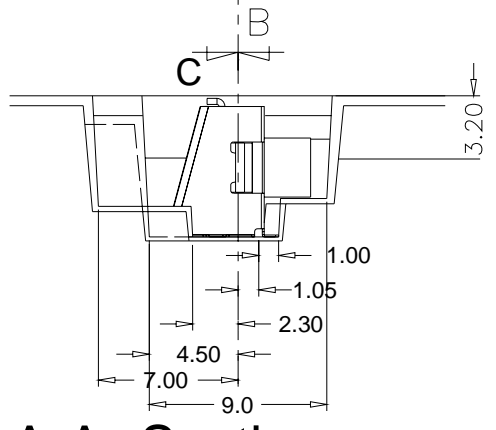
General Tolerance : ±0.1mm

TA(S)-633 REEL

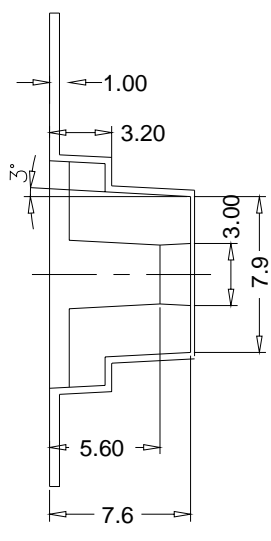
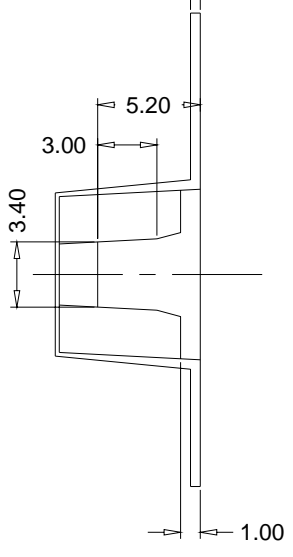


C-C Section

B-B Section



A-A Section



General Tolerance : ±0.1mm