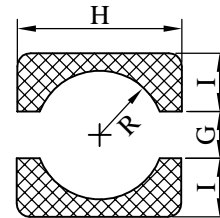
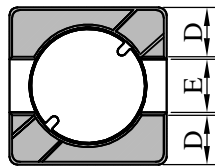
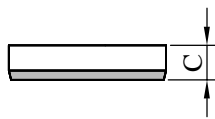
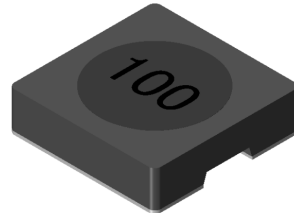
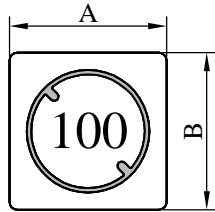


SPECIFICATION FOR APPROVAL

REF. :

PROD. NAME	Shielded SMD Power Inductor	ABC'S DWG NO.		SH4011□□□□L□-□□□		
		REV.	20151102-C	PAGE	1	

I . Configuration and dimensions :



(PCB Pattern)

Unit : m/m

A	B	C	D	E	G	H	I	R
4.80 ±0.3	4.80 ±0.3	1.15 ±0.15	1.60 typ.	1.60 typ.	1.50 ref.	5.30 ref.	2.00 ref.	1.80 ref.

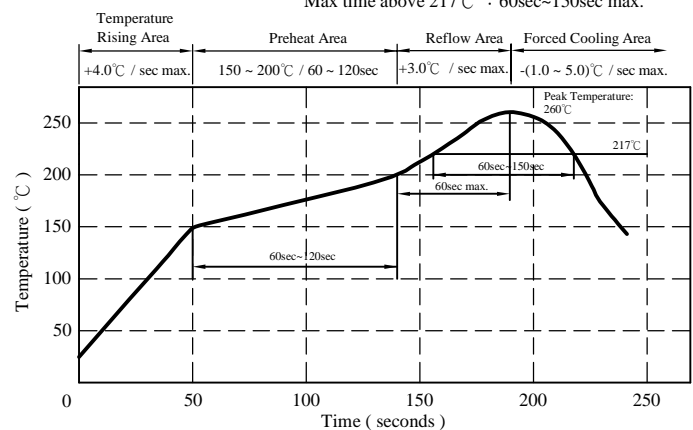
II . Description :

- a . Ferrite drum core construction.
- b . Magnetically shielded.
- c . Enamelled copper wire : F & H class
- d . Product weight : 0.18g (ref.)
- e . Moisture sensitivity Level 1
- f . Products comply with RoHS' requirements
- g . Halogen free available

III . General specification :

- a . Storage temp. : -40°C ----+125°C
- b . Operating temp. : -40°C ----+125°C
(Temp. rise included)
- c . Resistance to solder heat : 260°C .10 secs.

Peak Temp : 260°C max.
Max. Peak Temp - 5°C : 30sec max.
Max time above 217°C : 60sec~150sec max.



AR-001C

SPECIFICATION FOR APPROVAL

REF. :

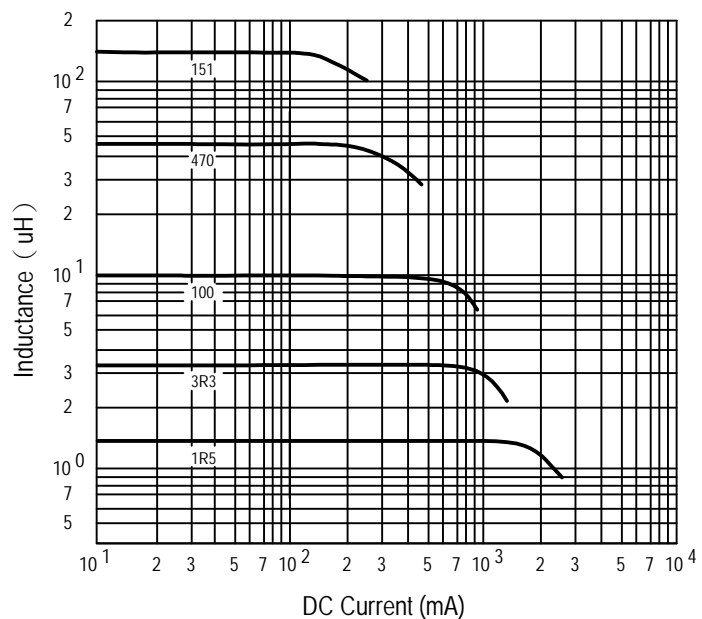
PROD. NAME	Shielded SMD Power Inductor	ABC'S DWG NO.	SH4011□□□□L□-□□□		
		REV.	20151102-C	PAGE	2

IV . Electrical characteristics :

DWG No.	Inductance (μH)	Q ref.	Test Freq. (MHz)	SRF (MHz) typ.	RDC (mΩ)		Irms (mA) typ.	Isat (mA) typ.
					typ.	max.		
SH4011R47YL□-□□□	0.47 ± 30 %	7	25.2	221	22	30	3200	3800
SH4011R2YL□-□□□	1.20 ± 30 %	10	7.96	133	35	48	2700	2500
SH4011R5YL□-□□□	1.50 ± 30 %	11	7.96	121	42	56	2300	2100
SH4011R2YL□-□□□	2.20 ± 30 %	11	7.96	92	55	75	2000	1800
SH4011R3YL□-□□□	3.30 ± 30 %	10	7.96	67	82	110	1600	1400
SH4011R47YL□-□□□	4.70 ± 30 %	13	7.96	61	124	165	1350	1200
SH4011R6R2YL□-□□□	6.20 ± 30 %	7	7.96	51	144	195	1200	1000
SH4011R8R2YL□-□□□	8.20 ± 30 %	8	7.96	39	162	215	1100	920
SH4011100YL□-□□□	10.00 ± 30 %	14	2.52	41	185	240	1000	830
SH4011150YL□-□□□	15.00 ± 30 %	11	2.52	33	300	400	900	700
SH4011220YL□-□□□	22.00 ± 30 %	13	2.52	23	460	580	600	570
SH4011330YL□-□□□	33.00 ± 30 %	15	2.52	20	680	860	550	470
SH4011470YL□-□□□	47.00 ± 30 %	10	2.52	18	980	1250	480	400
SH4011680YL□-□□□	68.00 ± 30 %	12	2.52	14	1450	1800	350	320
SH4011820YL□-□□□	82.00 ± 30 %	13	2.52	11	1700	2200	330	300
SH4011101YL□-□□□	100.00 ± 30 %	18	0.796	11	1950	2400	310	270
SH4011151YL□-□□□	150.00 ± 30 %	39	0.796	8	3100	3800	250	220

- 1). □: Packaging information : □ Code
- 2). "-□□□" : Reference code
- 3). Electrical specifications at 25°C
- 4). Inductance test freq. : 100kHz / 0.1V
- 5). Irms Base on temp rise 40°C typ.
- 6). Isat Base on ΔL/L0A=30% typ.

@ Inductance VS. DC Current Curve



AR-001C

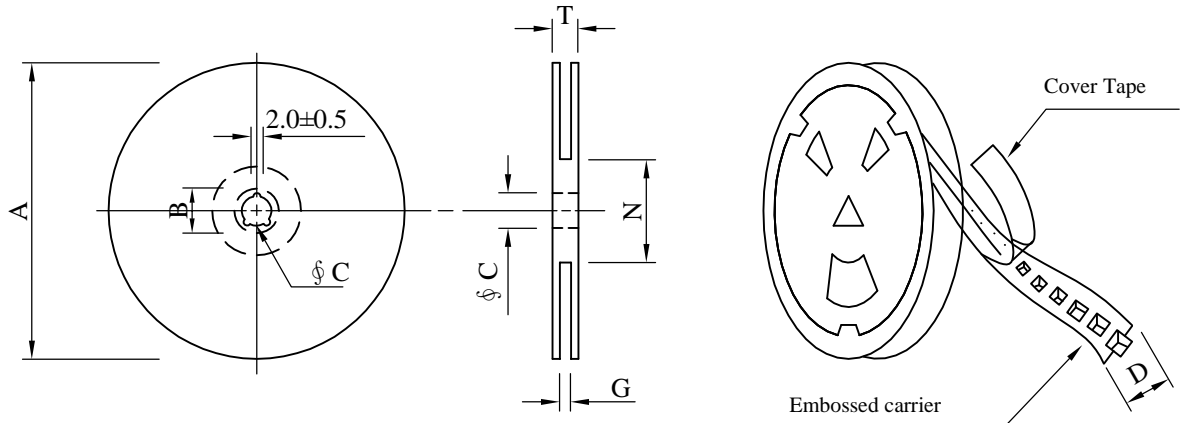
SPECIFICATION FOR APPROVAL

REF. :

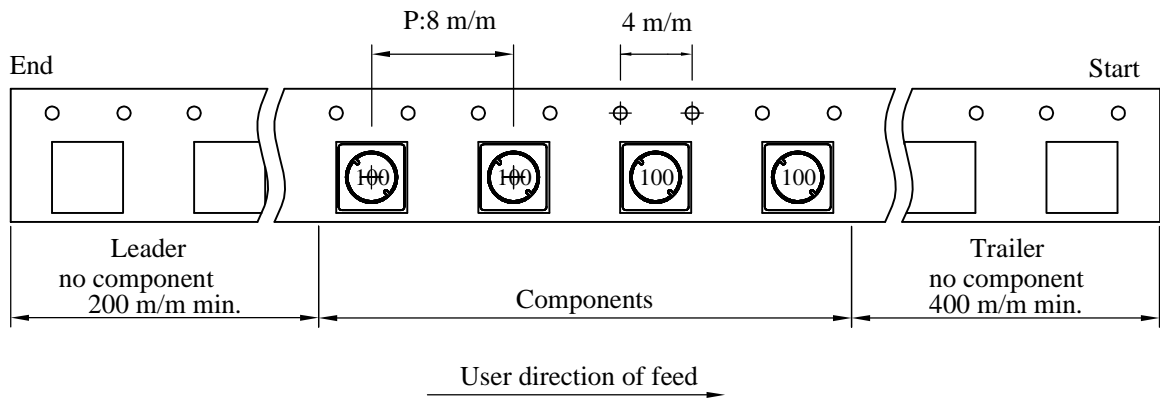
PROD. NAME	Shielded SMD Power Inductor	ABC'S DWG NO.		SH4011□□□□L□-□□□	
		REV.	20151102-C	PAGE	3

V . Packaging information :

(1) Configuration



※Carrier tape width : D



(2) Dimensions

Unit:m/m

Style	A	B	C	D	G	N	T
07 - 12	178	21±0.8	13	12	14 ⁺⁰	50 ⁻⁰	16.5

(3) Q'TY & G.W. Per package

Code	Inner : Reel			Outer : Carton		
	Q'TY (pcs)	G.W. (gw)	Style	Q'TY (pcs)	G.W. (Kg)	Size (cm)
B	1,200	280	07 - 12	48,000	12.4	42 x 41 x 24

AR-001C

SPECIFICATION FOR APPROVAL

REF. :

PROD. NAME	Shielded SMD Power Inductor	ABC'S DWG NO.	SH4011□□□□L□-□□□	
		REV.	20151102-C	PAGE 4

VI . Reliability test :

Item	Reference documents	Test Condition	Test Specification
1.High Temperature Exposure	MIL-STD-202 Method 108	1.Temperature: 125±2℃ 2.Time:96±2 hours.	1.No mechanical or electrical damage. 2.Inductance shall not change more than ±20%.
2.Temperature Cycling	JESD22-A 104	1.Temperature: -40℃ ~ +125℃ 2.Number of cycle:100 cycle 3.Dwell time:30 minutes	1.No mechanical or electrical damage. 2.Inductance shall not change more than ±20%.
3.Biased Humidity Test	MIL-STD-202 Method 103	1.Temperature : 85±2 ℃ 2.Humidity: 85% RH. 3.Time:96±2 Hours	1.No mechanical or electrical damage. 2.Inductance shall not change more than ±20%.
4.Operational Life	JESD22-A 108	1.Temperature: 125℃ (Temp. rise included) 2.Time:96±2 hours. 3.Rated current	1.No mechanical or electrical damage. 2.Inductance shall not change more than ±20%.
5.External Visual	JESD22-B 101 & MIL-STD-883 Method 2009	Inspect product constructions, marking and workmanship.	1.No pollution on the surface of products. 2.Clear marking. 3.No crack.
6.Physical Dimensions	JESD22-B 100	Verify physical dimensions to the applicable product detail specification.	Per product specification standard
7.Resistance to solvents	MIL-STD-202 Method 215	Immerse into solvent for 3±0.5 minutes & brush 10 times for 3 cycles.	1.No body change in appearance. 2.No marking blurred. 3.Inductance shall not change more than ±20%.
8.Vibration Test	MIL-STD-202 Method 204	1.Frequency and Amplitud : 10-2000-10 Hz, 1.5 mm. 2.Direction:X, Y, Z 3.Test duration:2 hours for each direction, 6 hours in total.	1.No mechanical or electrical damage. 2.Inductance shall not change more than ±20%.
9.Resistance To Soldering Heat Test	MIL-STD-202 Method 210 & J-STD020D.1	1.Highest temperature : 260±5℃. 2.Time (temp. ≥ 217℃) : 60~150 Second. 3.IR reflow times : 3 times.	1.No mechanical or electrical damage. 2.Inductance shall not change more than ±20%.
10.Saturation Current	JIS C 6436 & User SPEC.	1.Applied rated current for 5 second. 2.Saturation current	Inductance shall not drop more than 30% typ.
11.Over load	JIS C 6436 & User SPEC.	1.Applied one and half rated current for a period of 5 minutes. 2.Rated current	No electrical or mechanical damage
12.Temperature Rise Current	JIS C 6436 & User SPEC.	1.Applied rated current for 10 minutes. 2.Temperature measure by digital surface thermometer. 3.Irms current	Surface temperature rise is less than 40 ℃ typ.
13.Solderability Test	J-STD-002 & JESD22-B 102	1.Baking in pre-testing : 150±5℃ / 16Hours±30 min. 2.Peak temperature : 240±5℃ 3.Time (temp. ≥ 217℃) : 60~150 second. 4.IR reflow times : 1 times.	More than 95% soldering coverage min on terminations.
14.Electrical Characteriazation	MIL-STD-202 Method 304 & User SPEC.	1.Operating temperature : -40℃~125℃ 2.Room temperature : 25℃.	1.No mechanical or electrical damage. 2.Inductance shall not change more than ±20%.
15.Drop	CNS-C6354 & GB/T 2423.8	1.Products shall be mounted on SPEC. pcb and dropped down from a heigh of 1m 2.Drop total time : 6 time (Every side ofsample drop 2 time)	1. Adhesion on PCB shall be enough. 2. Product appearance shall not break. 3. No electrical damage.
16.Terminal Strength Test	IEC 60068-2-21	1.Apply push force to samples mounted on PCB. 2.Force of 1.8 kg for 60±1 seconds.	After test, inductors shall be no mechanical damage.

AR-001C