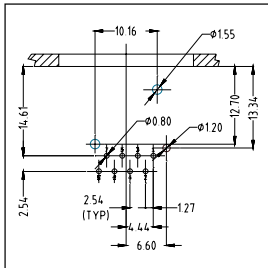
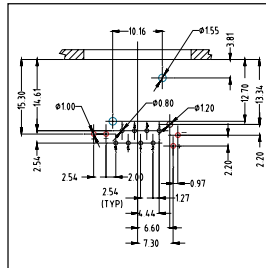


## XLrNET A, B AND D TYPE SERIES

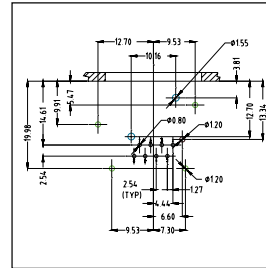
\* Applicable to 3 (Class D), 5 (CAT5E) and 6 (CAT6), where available



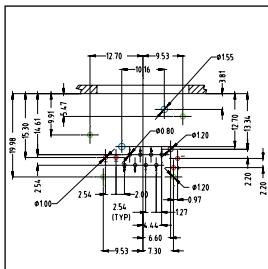
RJX8FA\*H  
RJX8FA\*HB



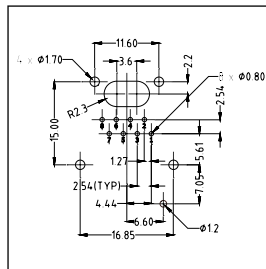
RJX8FB\*HRGB  
RJX8FB\*HRYB  
RJX8FB\*HRRB  
RJX8FB\*HGRB  
RJX8FB\*HGYB  
RJX8FB\*HGGB



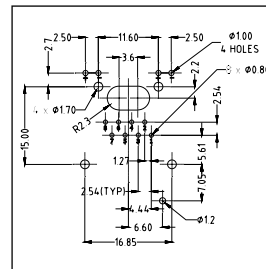
RJX8FB\*HEB



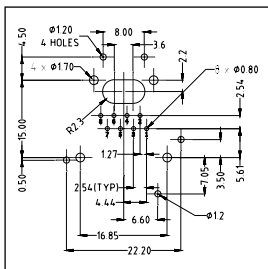
RJX8FB\*HRGEB  
RJX8FB\*HRYEB  
RJX8FB\*HRRB  
RJX8FB\*HGREB  
RJX8FB\*HGYEB  
RJX8FB\*HGGB



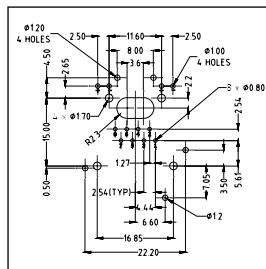
RJX8FA\*VB  
RJX8FB\*VB



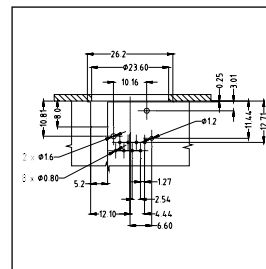
RJX8FB\*VRGB  
RJX8FB\*VRyb  
RJX8FB\*VRRB  
RJX8FB\*VGRB  
RJX8FB\*VGYB  
RJX8FB\*VUUB



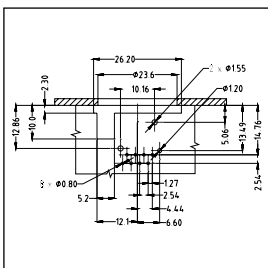
RJX8FB\*VEB



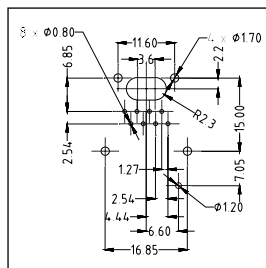
RJX8FB\*VRGEB  
RJX8FB\*VRyEB  
RJX8FB\*VRRB  
RJX8FB\*VGREB  
RJX8FB\*VGYEB  
RJX8FB\*VUUEB



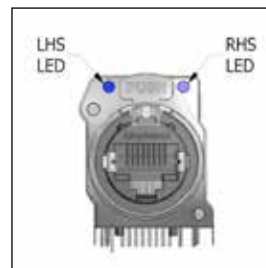
RJX8FD\*HB  
(Front Mounting)



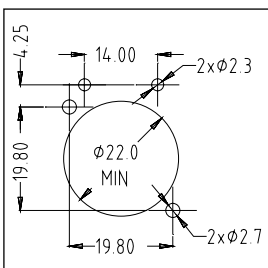
RJX8FD\*HB  
(Rear Mounting)



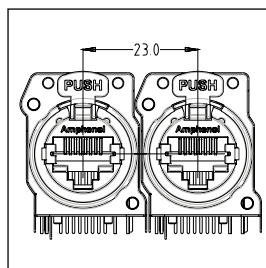
RJX8FD\*VB



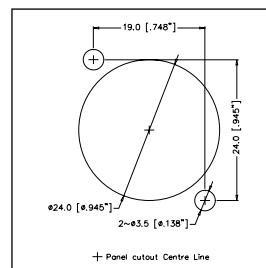
LED Arrangement  
(Front view)



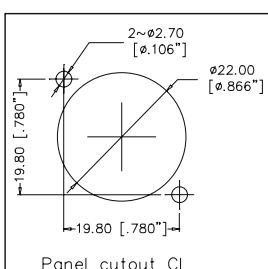
PANEL CUTOUT  
A and B type  
with LED's



XLrnet  
MOUNTING  
PITCH /  
A and B Type



D Type



A and B Type

