

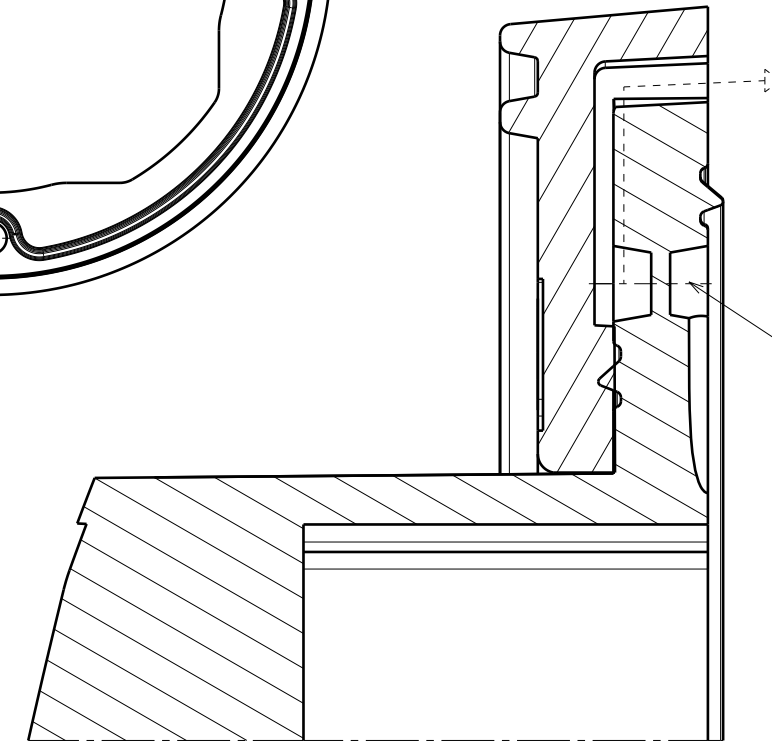
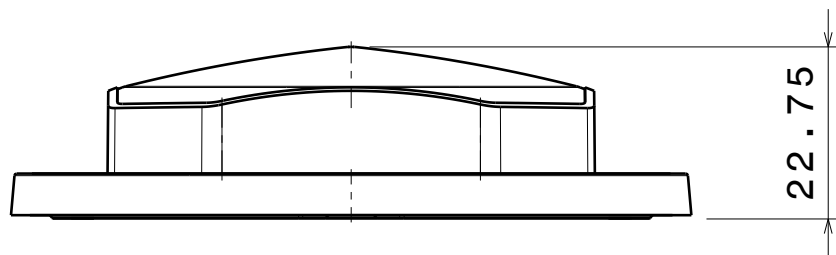
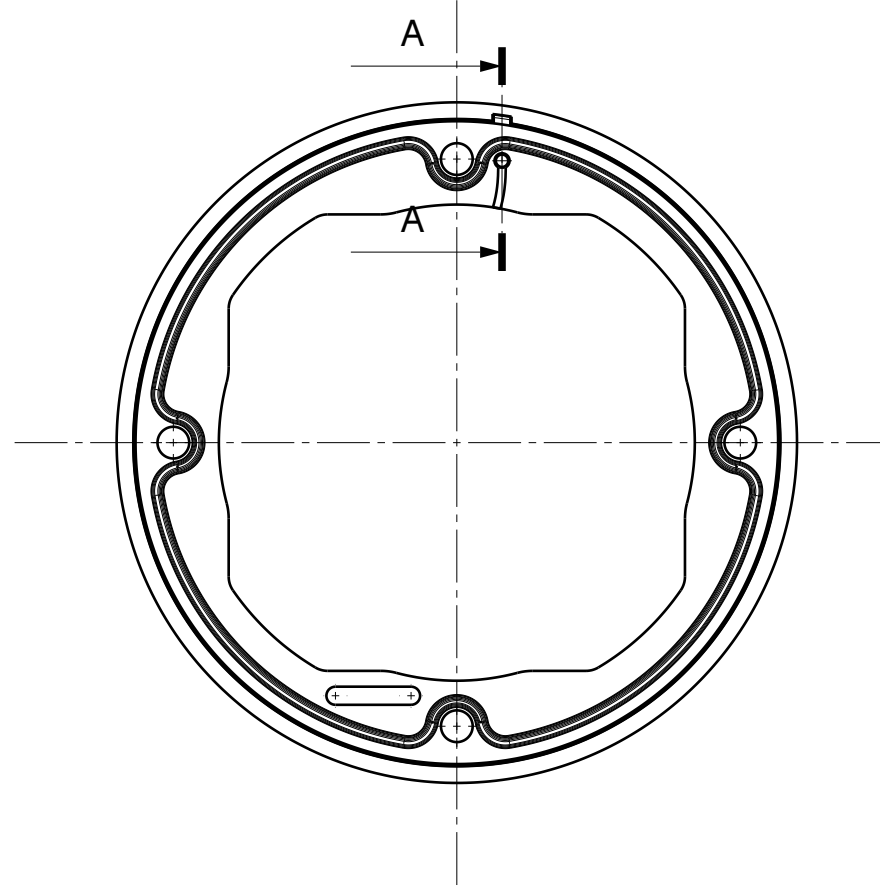
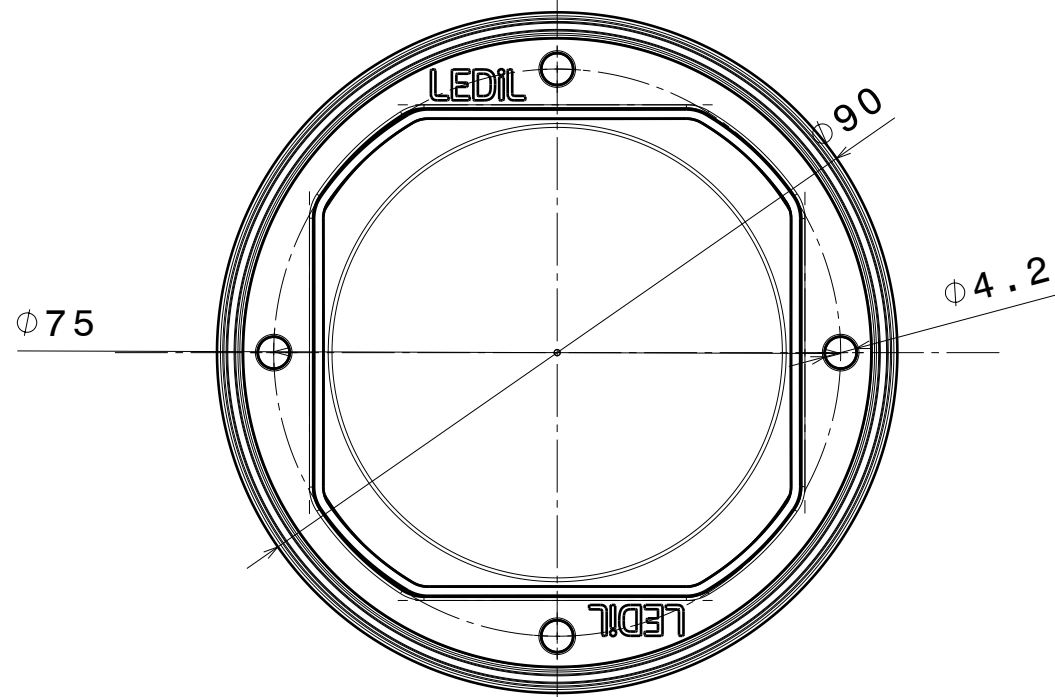
DETAILS

Product Number	FN15188_STELLA-FRESNEL
Family	STELLA
Type	Lens
Color	white
Diameter	90 mm
Height	23 mm
Style	round
Optic Material	Silicone
Holder Material	
Fastening	
Status	production ready
ROHS Compliant	Yes
Date Updated	5/04/2016



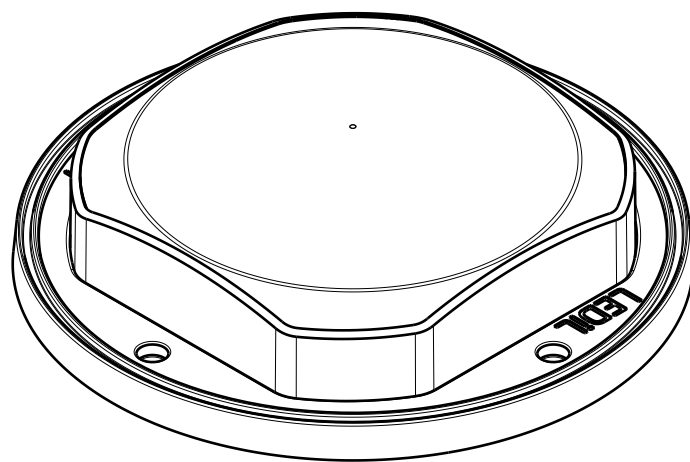
OPTICAL PROPERTIES

LED	Viewing Angle	Light Beam	Effi- ciency	cd/lm	Connector
CXA/B 25xx	sim: 24	Streetligh...	sim: 86 %	sim: 2.600	-
LUXEON CoB 1208	sim: 22	Streetligh...	sim: 85 %	sim: 2.800	-
Soleriq P13	25 deg	Streetligh...	89 %	1.900	-
CLL04x/CLU04x	36 deg	Streetligh...	86 %	1.100	-
LUXEON CoB 1216	39 deg	Streetligh...	86 %	0.930	-
CXM-22	39 deg	Streetligh...	88 %	0.940	Bender Wirth: 431 Typ L3



Section view A-A
Scale: 5:1

NOTE: Maximum recommended tightening torque for STELLA-FRAME-WHT is 0,4Nm

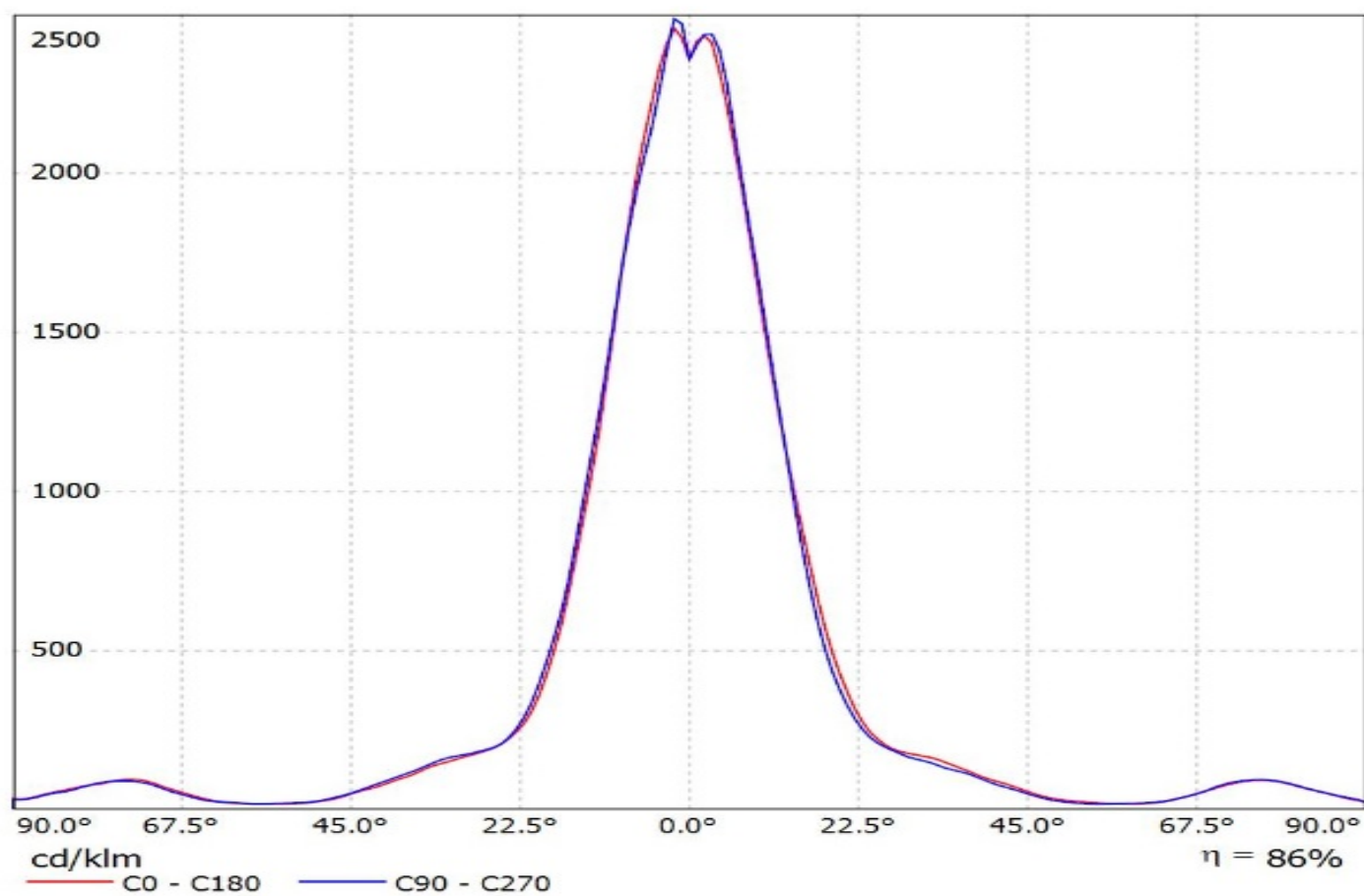


Isometric view
Scale: 1:1

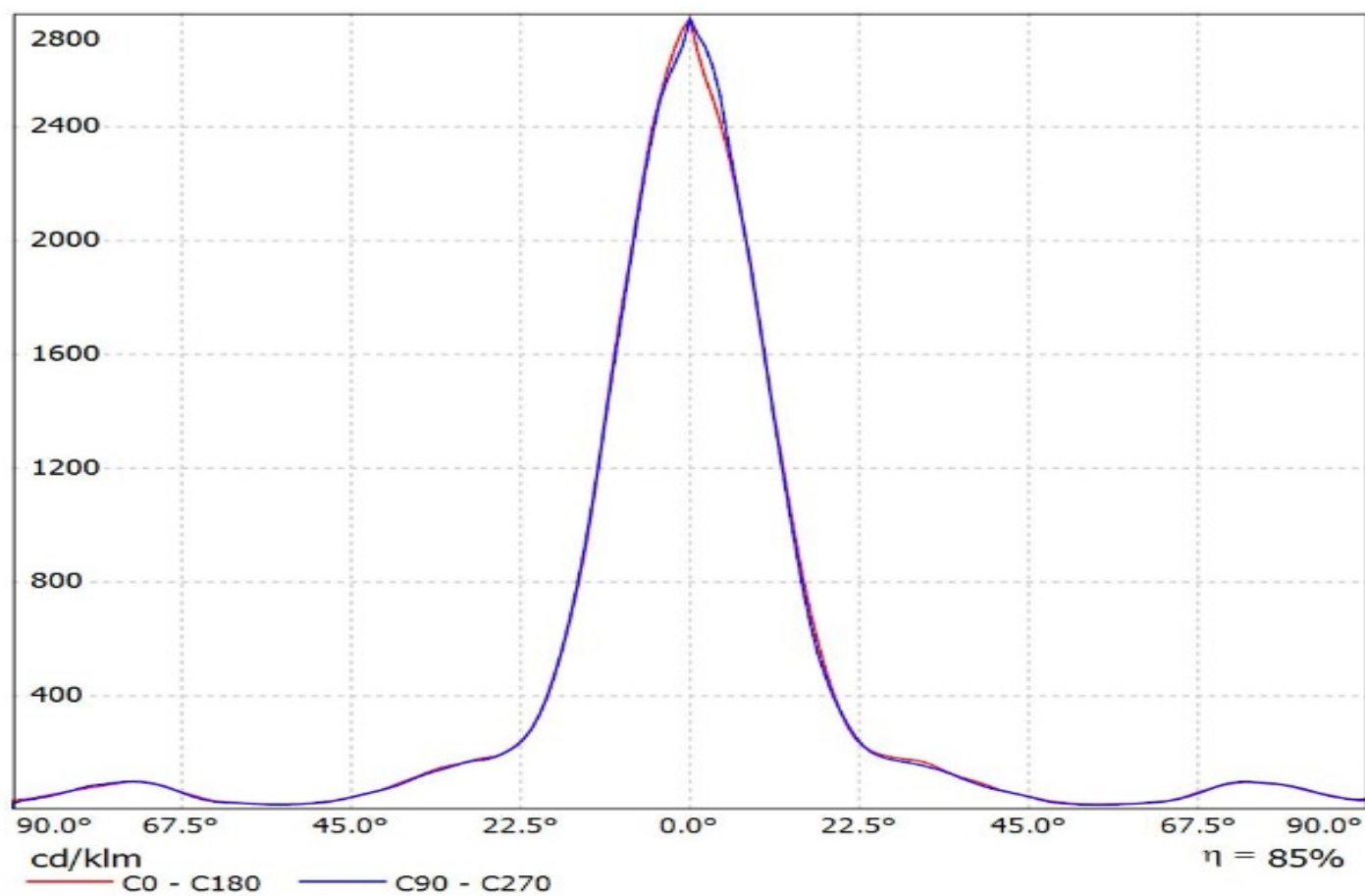
INDEX	PART NO	DESCRIPTION	MATERIAL	COLOUR
1	F14627	STELLA-FRESNEL	Optical grade LSR	
	F14252	STELLA-FRAME-WHT	PA66GF30	white

<div>Tolerances if not otherwise shown According to DIN ISO 2768-1 Linear measures: class V Please note that due to the elasticity of products made of silicone actual measured values may vary, and therefore typical tolerance values may not be applied.</div> <div>THIRD ANGLE PROJECTION: </div> <div>This drawing is the property of LEDiL Oy. It may not be reproduced, copied or communicated without a written agreement with LEDiL Oy.</div>		<div><div>LEDiL</div><div>Ledil Oy Salorankatu 10 FIN 24240 SALO Finland</div></div>		
		DRAWING TITLE FN15188_STELLA-FRESNEL		
SIZE A3		PART NUMBER FN15188		
SCALE	1:1	WEIGHT	35 g	SHEET 1/1

Luminaire: Ledil Oy FN15188_STELLA-FRESNEL_(CXA2590)_SIMULATED
Lamps: 1 x Cree CXA2590



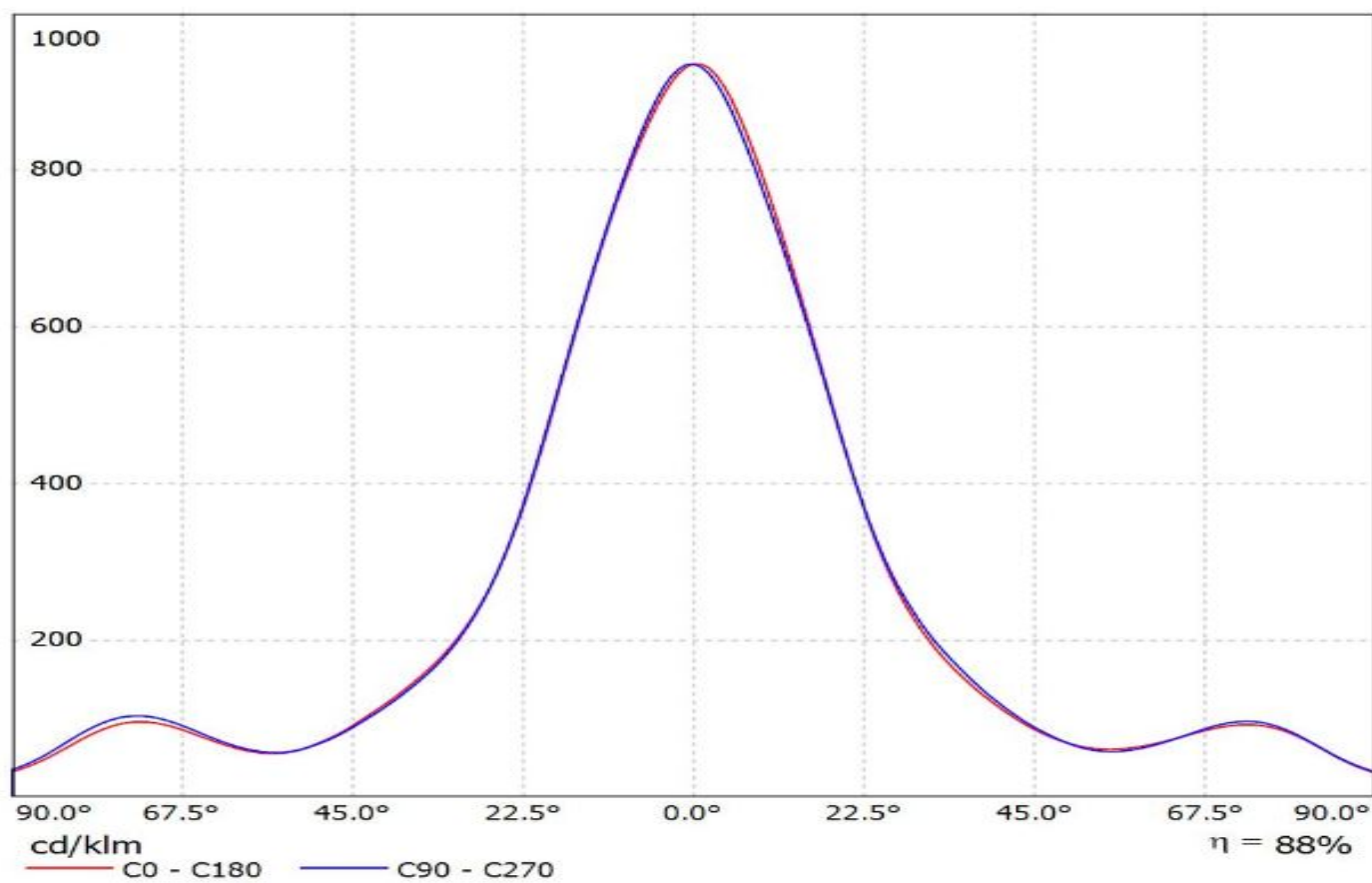
Luminaire: Ledil Oy FN15188_STELLA-FRESNEL_(Luxeon_CoB_1208)_SIMULATED
Lamps: 1 x Lumileds Luxeon CoB 1208



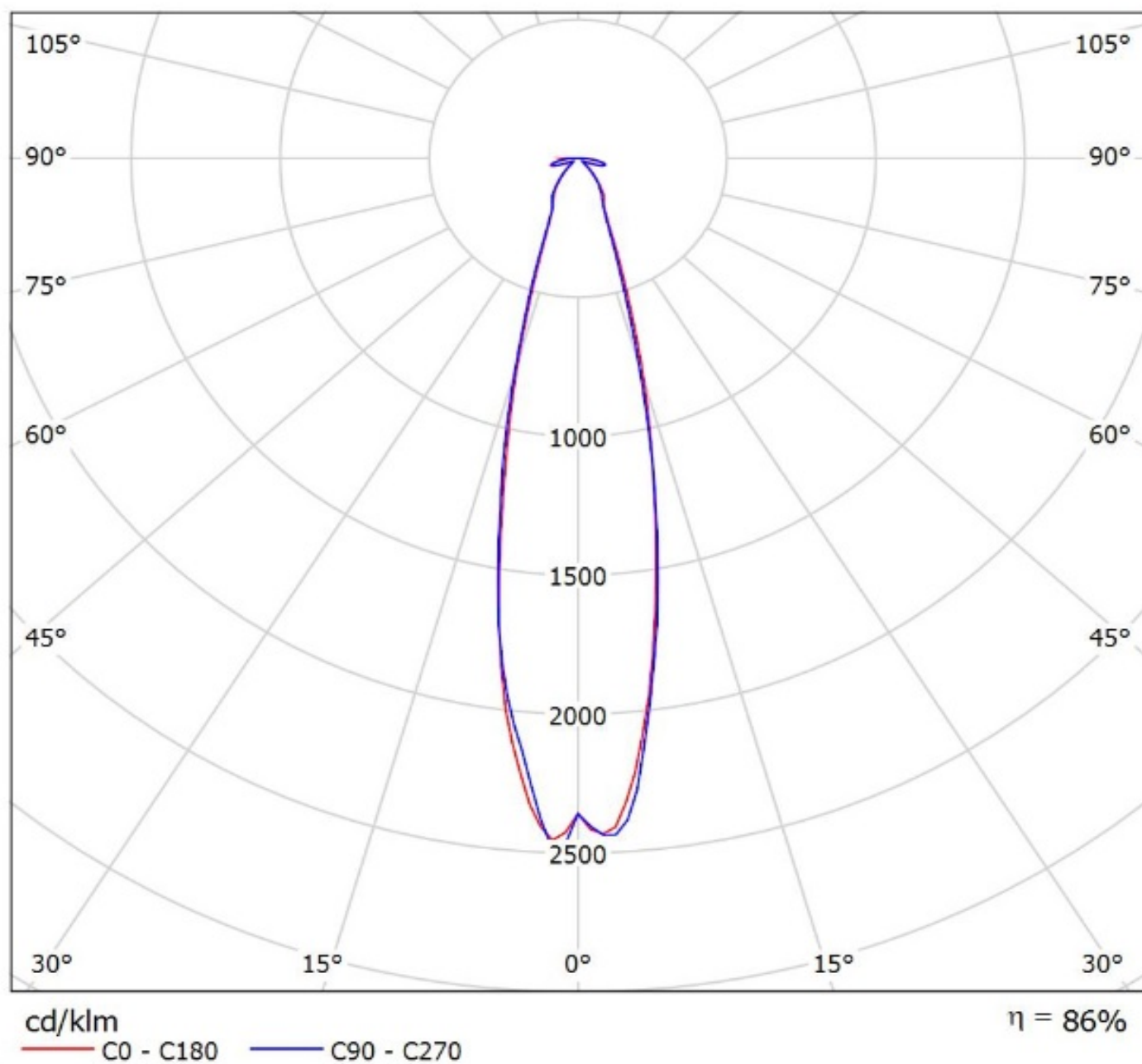
Luminaire: Ledil FN15188_STELLA-FRESNEL_(CXM-22_+BW)

Lamps: 1 x LUMINUS_CXM-

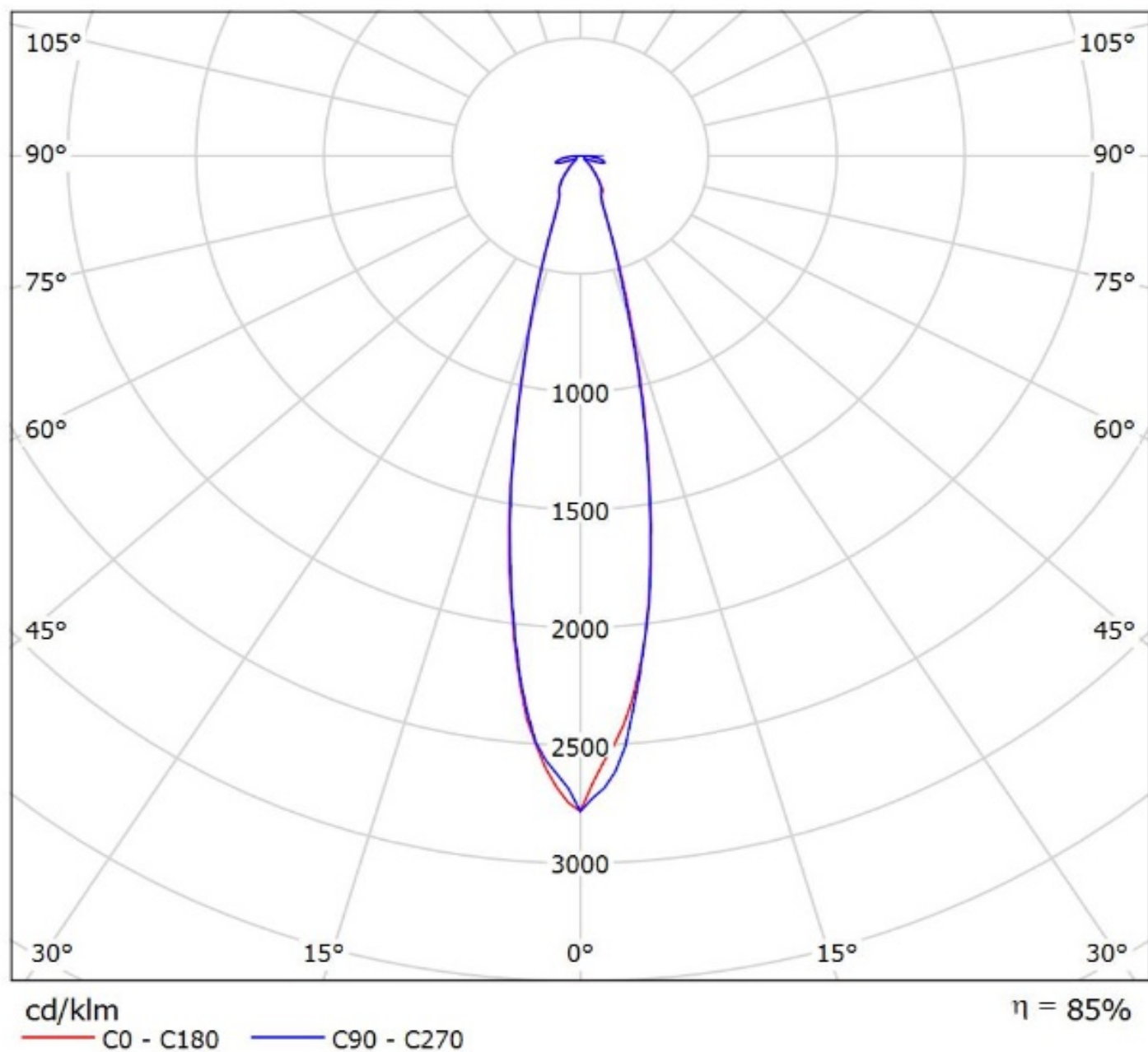
22_+Bender&Wirth_431TypL3_1259.61lm@250mA_P=8.0332W_CCT=3000K_I=0.25A



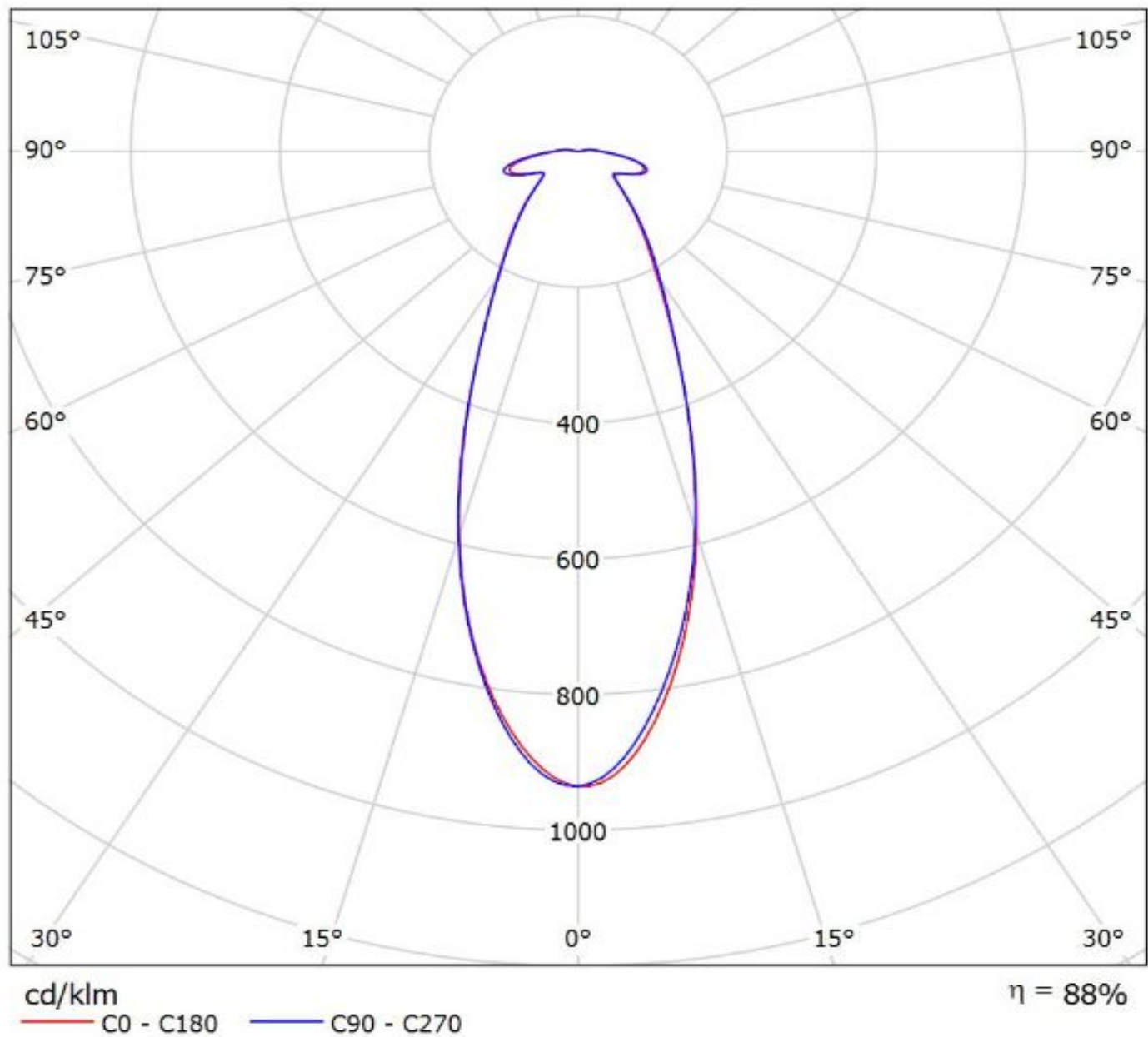
Luminaire: Ledil Oy FN15188_STELLA-FRESNEL_(CXA2590)_SIMULATED
Lamps: 1 x Cree CXA2590



Luminaire: Ledil Oy FN15188_STELLA-FRESNEL_(Luxeon_CoB_1208)_SIMULATED
Lamps: 1 x Lumileds Luxeon CoB 1208



Luminaire: Ledil FN15188_STELLA-FRESNEL_(CXM-22_+BW)
Lamps: 1 x LUMINUS_CXM-
22_+Bender&Wirth_431TypL3_1259.61lm@250mA_P=8.0332W_CCT=3000K_I=0.25A



NOTE: The typical divergence will be changed by different color, chip size and chip position tolerance. The typical total divergence is the full angle measured where the luminous intensity is half of the peak value.

GENERAL INFORMATION

- Product series especially designed & optimized for series of LEDs.
- Special care taken to make light distribution as uniform as possible.

Note! Due to use of high power COB's with this product, special attention to proper thermal design is highly recommended. LEDiL has no liability for direct, indirect or consecutive damages arising from the LEDiL products being used outside of the recommended temperature range.