

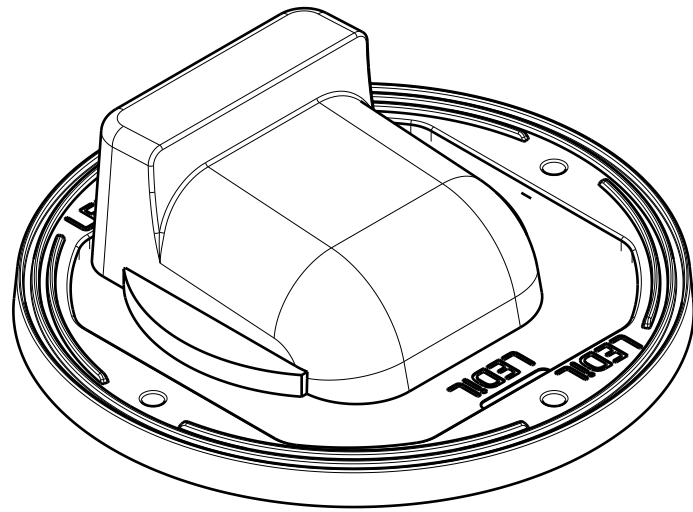
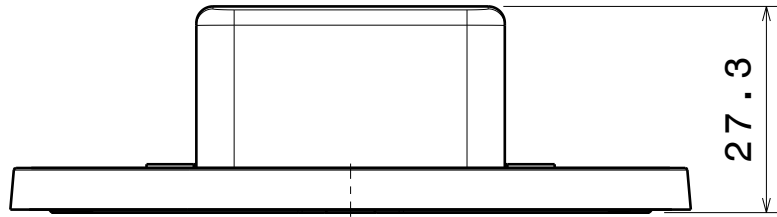
DETAILS

Product Number	FN15187_STELLA-T4
Family	STELLA
Type	Lens
Color	white
Diameter	90 mm
Height	26,9 mm
Style	round
Optic Material	Silicone
Holder Material	PA66GF30
Fastening	
Status	production ready
ROHS Compliant	Yes
Date Updated	5/04/2016

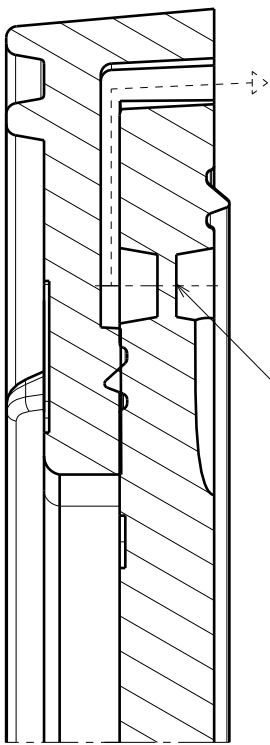


OPTICAL PROPERTIES

LED	Viewing Angle	Light Beam	Efficiency	cd/lm	Connector
VERO18	sim: Asymmetric	Streetlight	sim: 91 %	sim: 0.000	-
CLL03x/CLU03x	sim: Asymmetric	Streetlight	sim: 93 %	sim: 0.000	-
CXA/B 30xx	sim: Asymmetric	Streetlight	-	sim: 0.000	-
CXA/B 25xx	sim: Asymmetric	Streetlight	sim: 92 %	sim: 0.450	-
CXA/B 1830	sim: Asymmetric	Streetlight	sim: 93 %	sim: 0.000	-
CXM-18	asymmetric deg	Streetlight	94 %	0.500	-
CXM-14	asymmetric deg	Streetlight	94 %	0.500	-
Soleriq S13	asymmetric deg	Streetlight	93 %	0.530	-
Soleriq S19	asymmetric deg	Streetlight	93 %	0.490	-
Soleriq P9	asymmetric deg	Streetlight	94 %	0.710	-
Soleriq P13	asymmetric deg	Streetlight	93 %	0.490	-
LUXEON CoB 1208	Asymmetric deg	Streetlight	93 %	0.500	-
LUXEON CoB 1211	Asymmetric deg	Streetlight	92 %	0.500	-
SLE G5 LES15	Asym deg	Streetlight	91 %	0.500	-

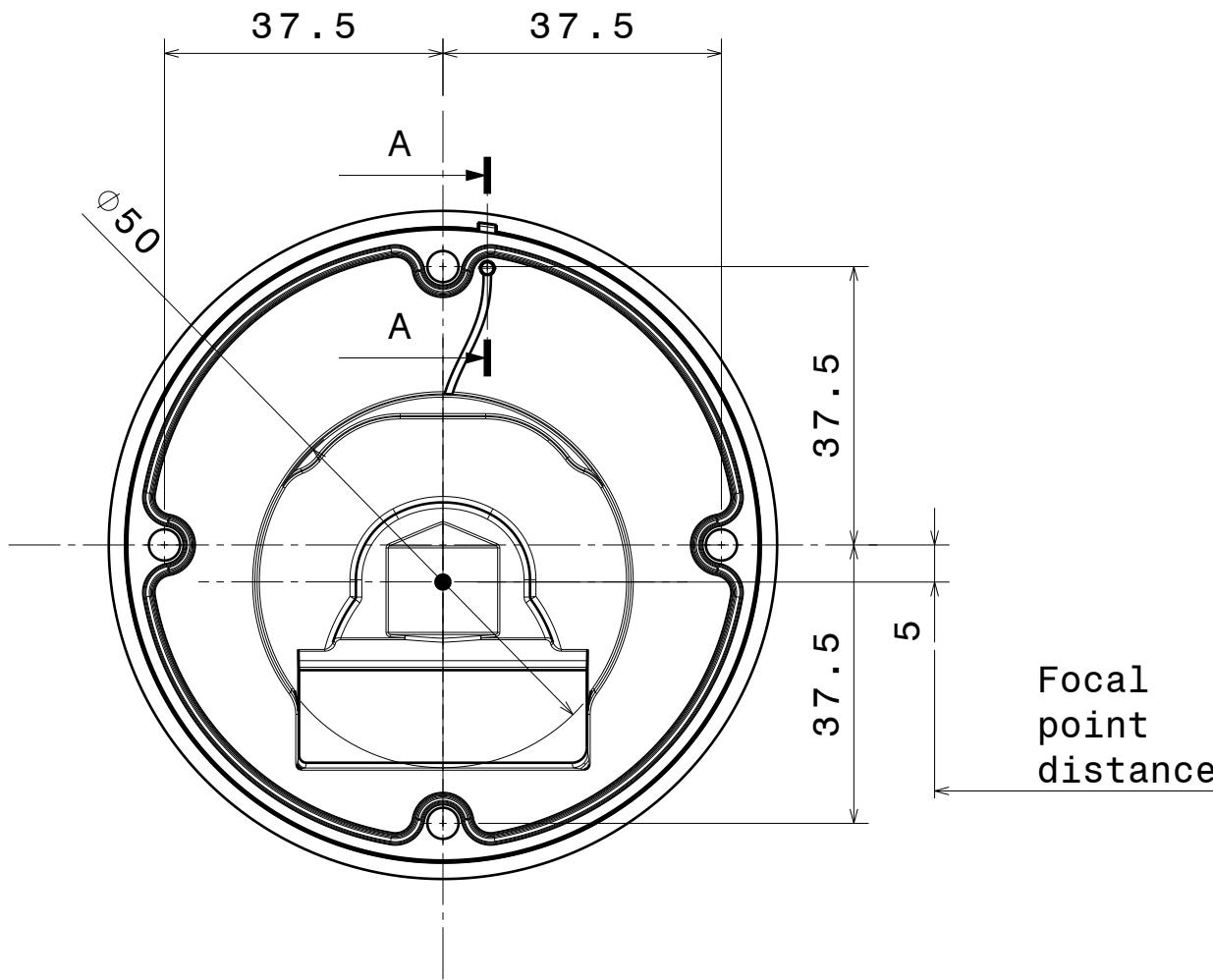
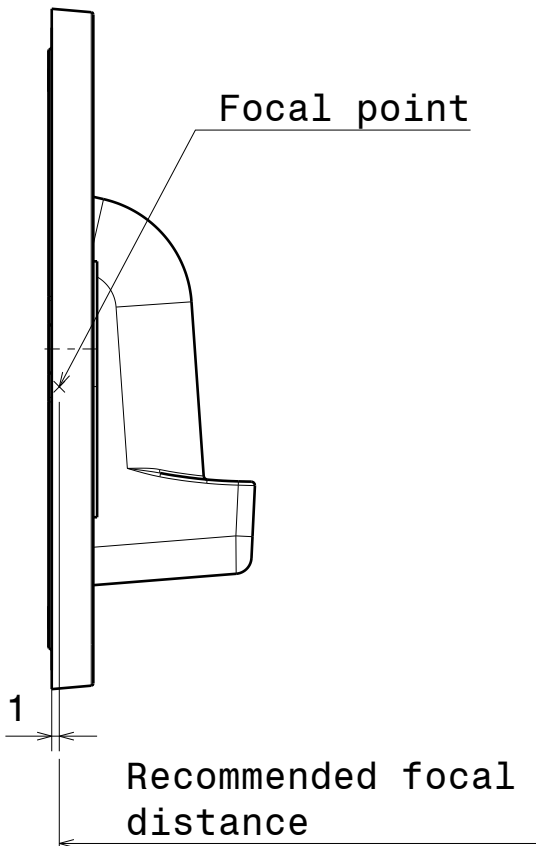
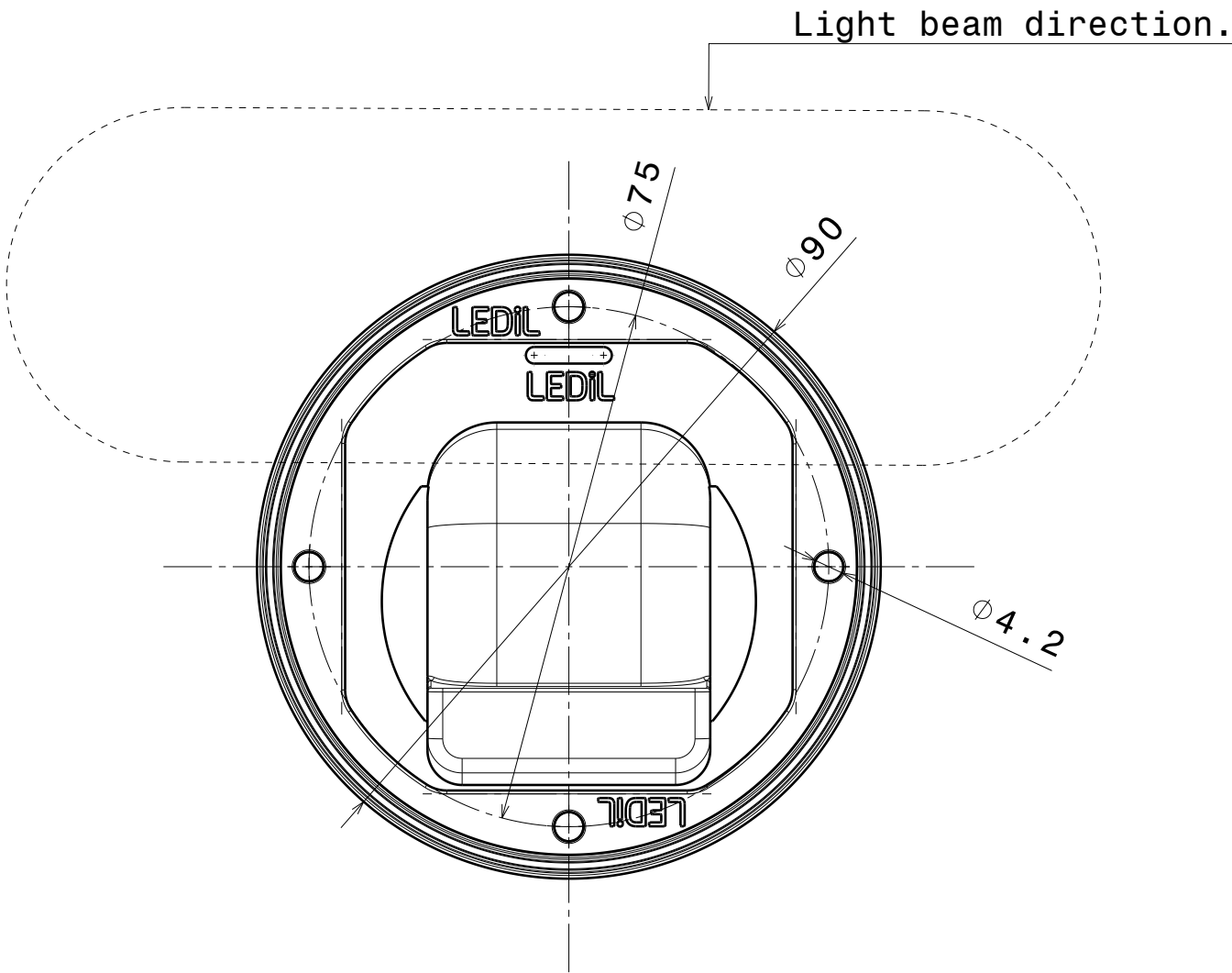


Isometric view
Scale: 1:1



Venting pipe:
Piercing this membrane
will Allow lens breathing

Section view A-A
Scale: 5:1

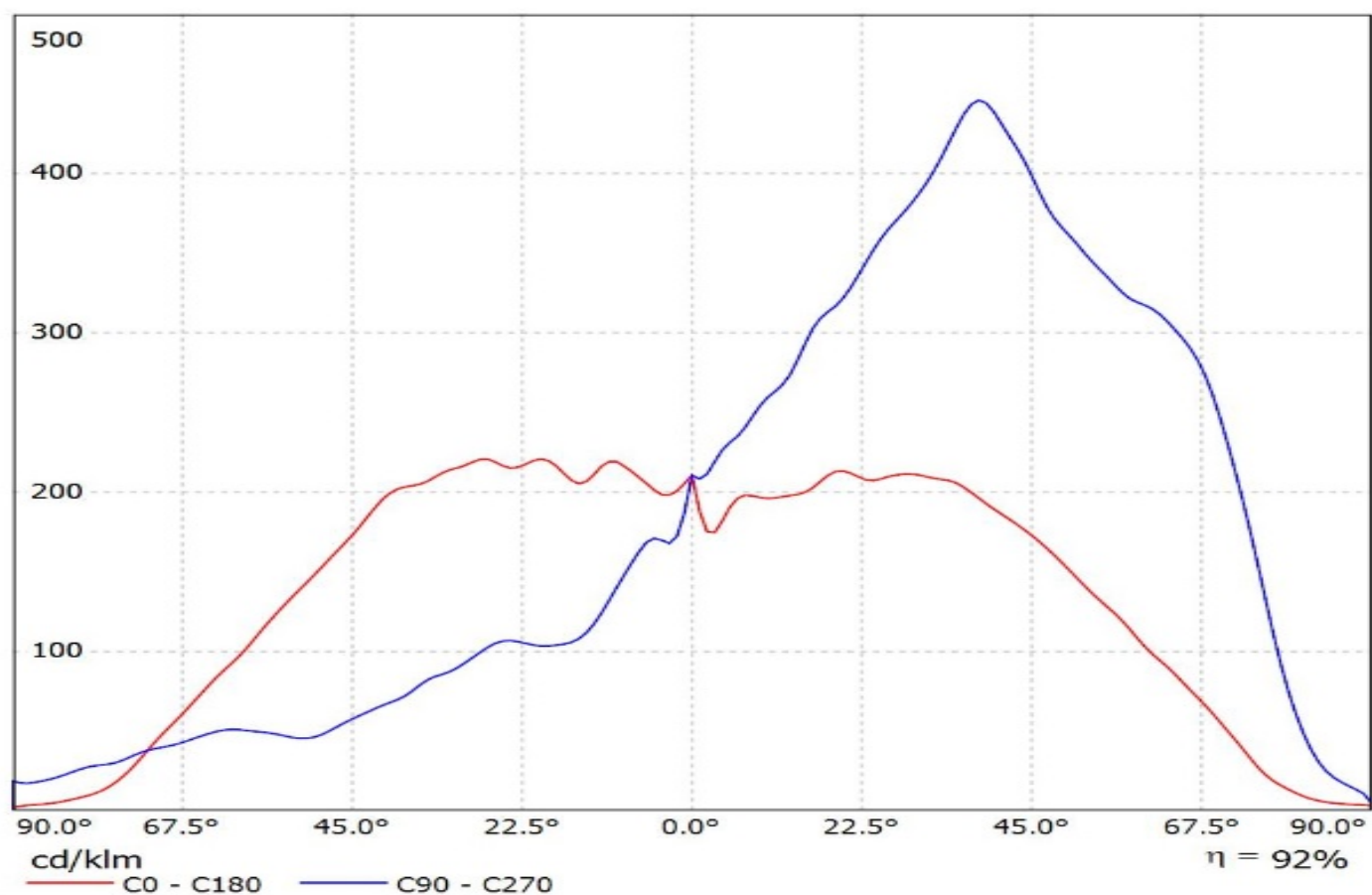


NOTE: Maximum recommended tightening
torque for STELLA-FRAME-WHT is 0,4Nm

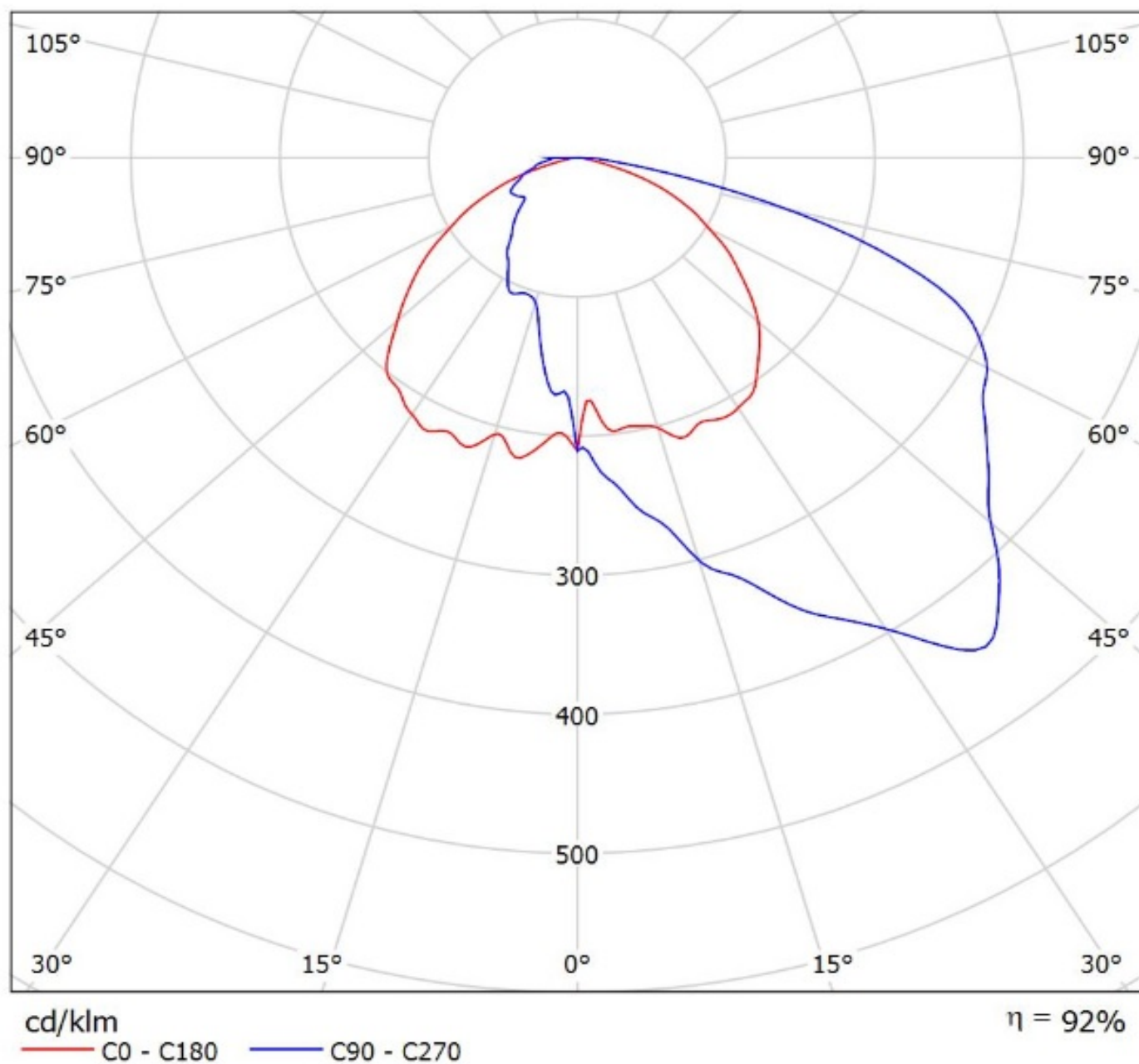
INDEX	PART NO	DESCRIPTION	MATERIAL	COLOUR
1	F14514	STELLA-T4	Optical grade LSR	
2	F14252	STELLA-FRAME-WHT	PA66GF30	white

<div>Tolerances if not otherwise shown According to DIN ISO 2768-1 Linear measures: class V Please note that due to the elasticity of products made of silicone actual measured values may vary, and therefore typical tolerance values may not be applied.</div> <div>THIRD ANGLE PROJECTION:</div> <div>This drawing is the property of LEDiL Oy. It may not be reproduced, copied or communicated without a written agreement with LEDiL Oy.</div>		<div>LEDiL</div> <div>Salorankatu 10 FIN 24240 SALO Finland</div>	
		DRAWING TITLE STELLA-T4 datasheet	
SIZE A2		PART NUMBER FN15187	
SCALE 1:1		WEIGHT -	SHEET 1/1

Luminaire: Ledil Oy FN15187_STELLA-T4_(CXA2590)_SIMULATED
Lamps: 1 x Cree CXA2590



Luminaire: Ledil Oy FN15187_STELLA-T4_(CXA2590)_SIMULATED
Lamps: 1 x Cree CXA2590



NOTE: The typical divergence will be changed by different color, chip size and chip position tolerance. The typical total divergence is the full angle measured where the luminous intensity is half of the peak value.

GENERAL INFORMATION

- Product series especially designed & optimized for series of LEDs.
- Special care taken to make light distribution as uniform as possible.

Note! Due to use of high power COB's with this product, special attention to proper thermal design is highly recommended. LEDiL has no liability for direct, indirect or consecutive damages arising from the LEDiL products being used outside of the recommended temperature range.