

LED MODULE 3R IP 6.000lm

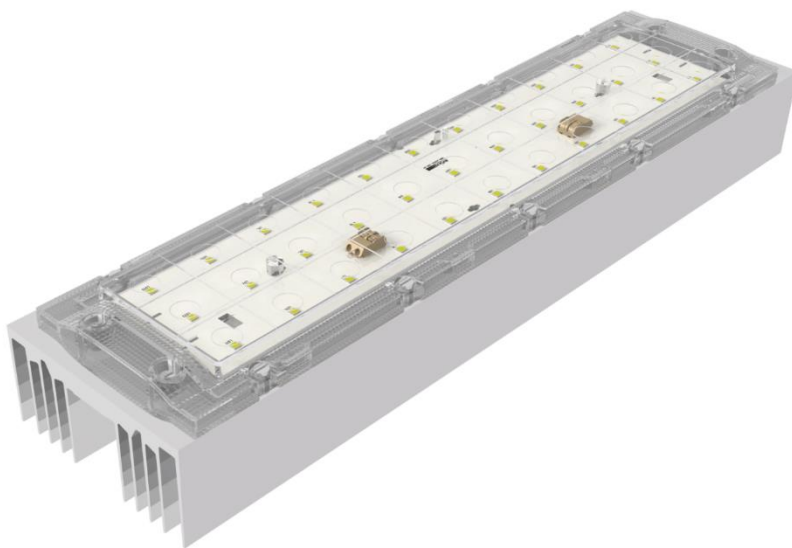
Issue Date	Jul - 2017
Issued by	Wilbur C.

Applications

- Highbay
- Street Light
- Gas station
- Projectors
- Decorative Poles

Characteristics

- Module Efficacy – up to 158 lm/W
- L70 > 50.000 hours
- CRI > 80 (Typ.85)
- 03 SDCM
- CCTs 3.000K / 4.000K / 5.000K
- 05 years warranty



DRIVE CURRENTS

Parameter	Nominal	Max
Led Module 3R IP	700 mA	700 mA

MODULE TEMPERATURES

Parameter	Nominal	Max
Tc (case temperature at Tc point)	60 °C	85 °C

PRODUCT PART NUMBER

ANGLE	3.000 K	4.000 K	5.000 K
90°	80101600100	80101700100	80101800100
60°	80101900100	80102000100	80102100100
84+90°	80102200100	80102300100	80102400100

TECHNICAL INFORMATION

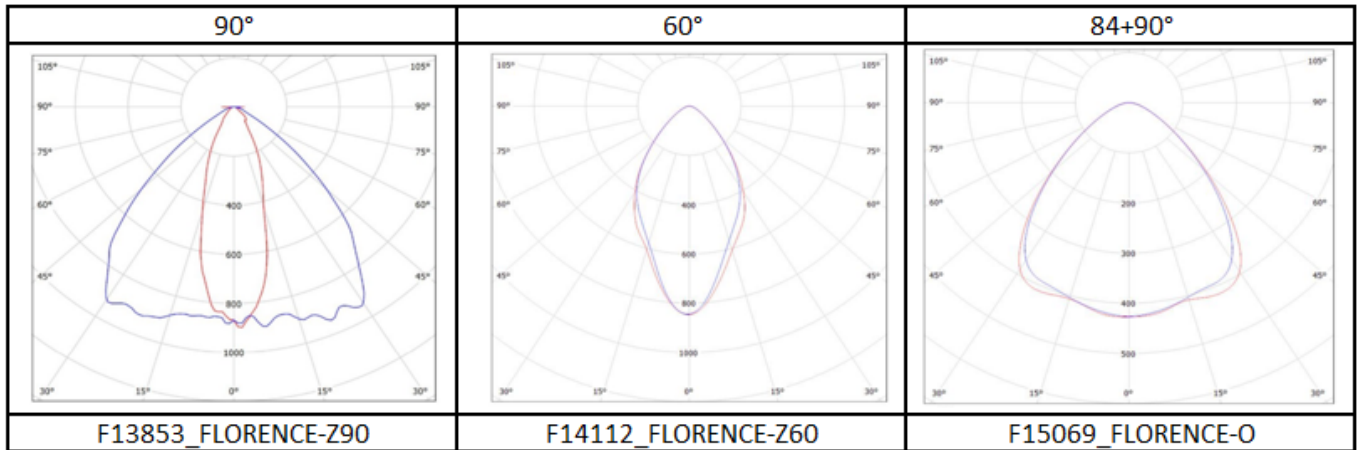
CCT	LED Driver Current (mA)	# LEDs	Luminous Flux (lm)*	Forward Voltage (V)	LED Forward Current (mA)	TC (°C)	Power (W)	Efficacy (lm/W)*
3.000 K	700	66	5.497	65,8	700	60	46,2	119
4.000 K	700	66	6.061	65,8	700	60	46,2	131
5.000 K	700	66	6.237	65,8	700	60	46,2	135

LED TYPE

Manufacturer: Nichia Corporation

LED Series: 757

COMPATIBLE OPTICS



WIRING

Specification item	Value	Unit	Condition
Input wire cross- section	0.25...0.75 18...24	mm ² AWG	Solid wire
Input wire strip length	7.5...8.5	mm	Solid wire
Input wire cross-section	0.33...0.5 20...22	mm ² AWG	Stranded wire
Input wire strip length	7.5...8.5	mm	Stranded wire