

LED MODULE 2X6 IP PREMIUM

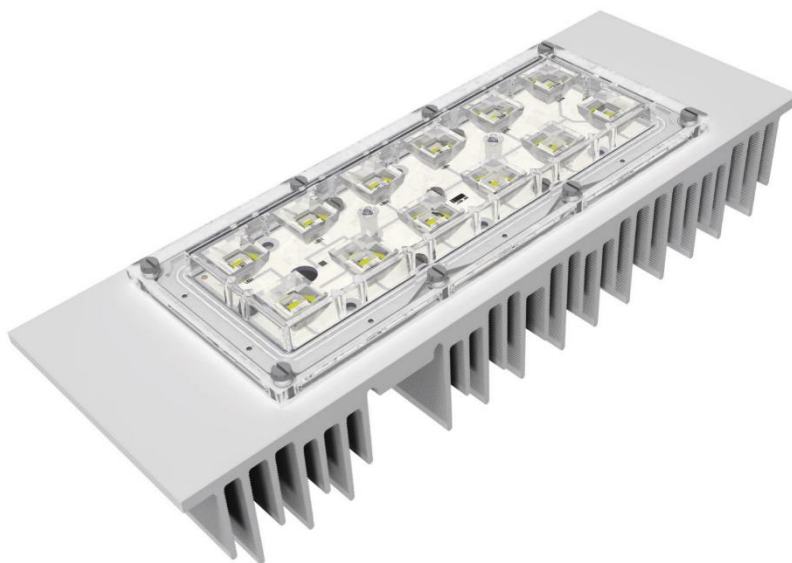
Issue Date	Jul - 2017
Issued by	Wilbur C.

Applications

- Highbay
- Street Light
- Gas station
- Projectors
- Decorative Poles

Characteristics

- Module Efficacy – up to 158 lm/W
- L70 > 50.000 hours
- CRI > 80 (Typ.85)
- 03 SDCM
- CCTs 2.700K / 4.000K / 5.000K
- 05 years warranty



DRIVE CURRENTS

Parameter	Nominal	Max
Led Module 2X6 IP PREMIUM	1.050 mA	1.500 mA

MODULE TEMPERATURES

Parameter	Nominal	Max
Tc (case temperature at Tc point)	60 °C	85 °C

PRODUCT PART NUMBER

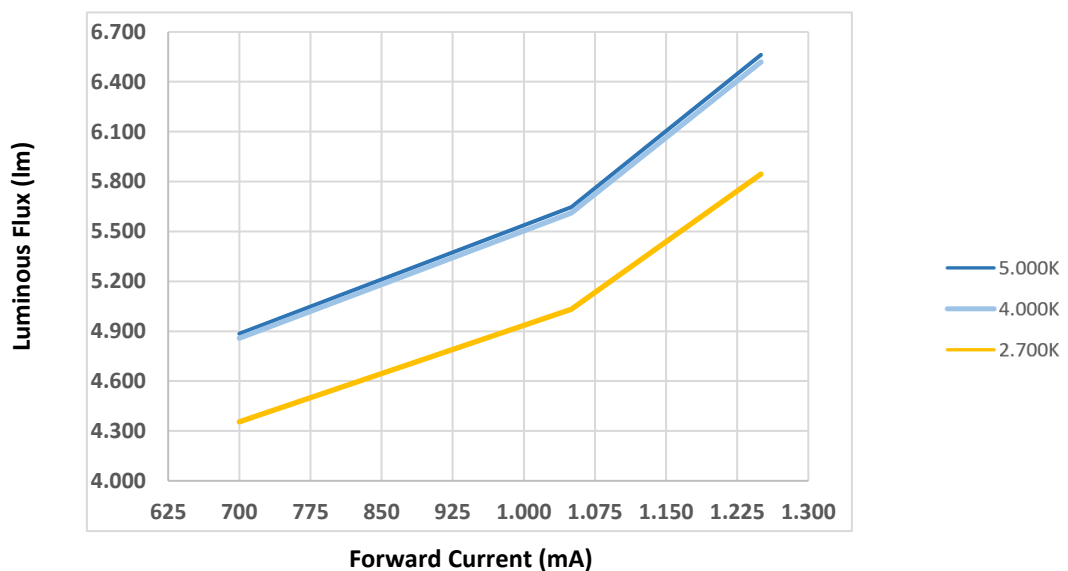
ANGLE	2.700 K	4.000 K	5.000 K
97°	80093800100	80093900100	80094000100
56°	80094100100	80094200100	80094300100
13°	80094400100	80094500100	80094600100
24°	80094700100	80094800100	80094900100
137°	80095000100	80095100100	80095200100
Asymmetric Street	80095300100	80095400100	80095500100
Asymmetric Street 90°	80095600100	80095700100	80095800100
31 + 116°	80095900100	80096000100	80096100100

TECHNICAL INFORMATION

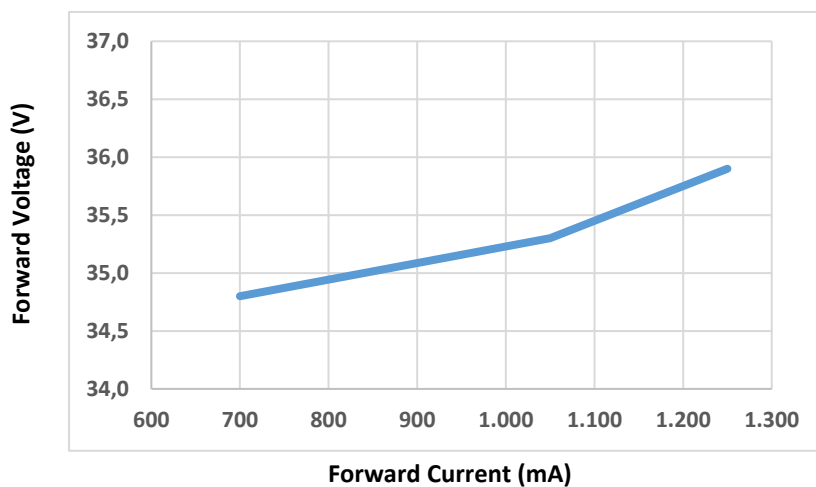
CCT	LED Driver Current (mA)	# LEDs	Luminous Flux (lm)*	Forward Voltage (V)	LED Forward Current (mA)	TC (°C)	Power (W)	Efficacy (lm/W)*
2.700 K	1.050	12	4.355	34,8	1.050	60	36,5	119
2.700 K	1.250	12	5.032	35,3	1.250	60	44,1	114
2.700 K	1.500	12	5.845	35,9	1.500	60	53,9	108
4.000 K	1.050	12	4.858	34,8	1.050	60	36,5	133
4.000 K	1.250	12	5.612	35,3	1.250	60	44,1	127
4.000 K	1.500	12	6.519	35,9	1.500	60	53,9	121
5.000 K	1.050	12	4.885	34,8	1.050	60	36,5	134
5.000 K	1.250	12	5.646	35,3	1.250	60	44,1	128
5.000 K	1.500	12	6.562	35,9	1.500	60	53,9	122

TECHNICAL GRAPHS

Luminous Flux (lm) x Forward Current (mA) (TC 60°C)



Forward Voltage (V) x Forward Current (mA) (TC 60°C)

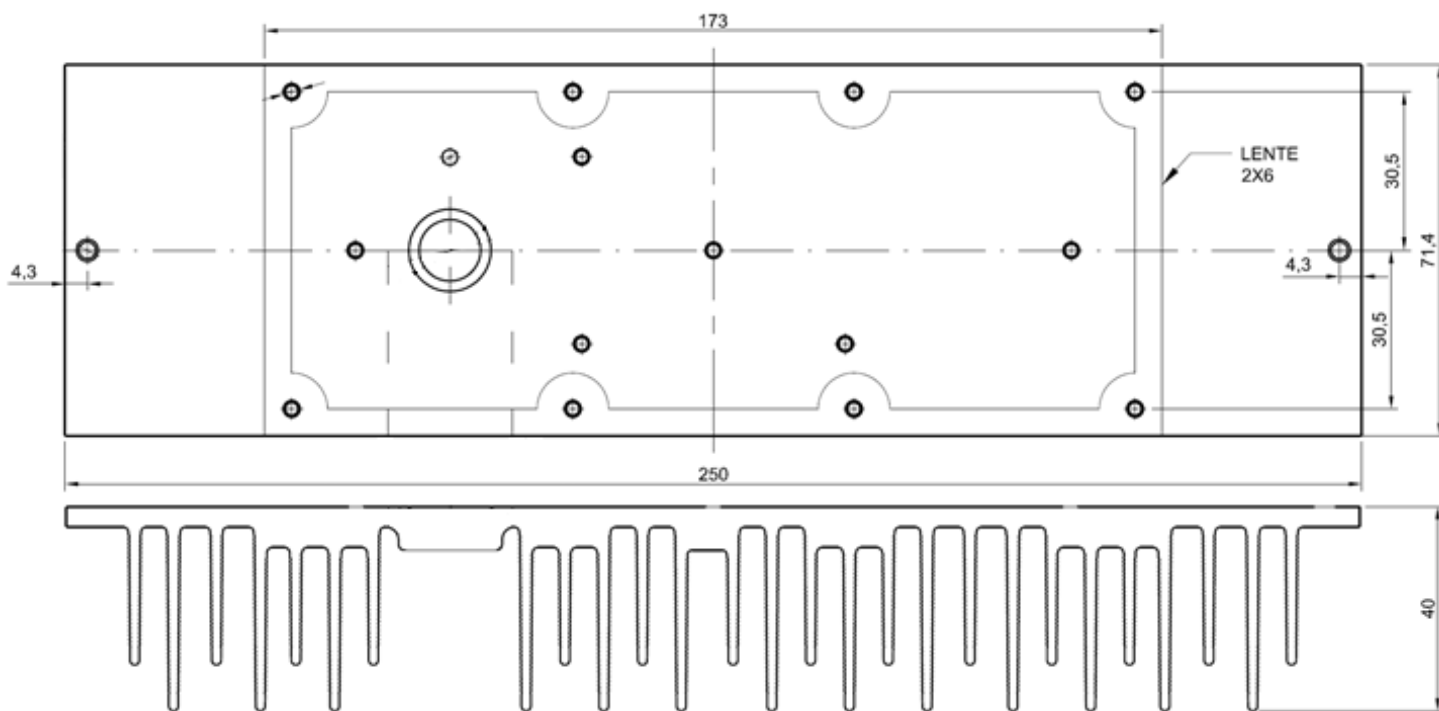


LED TYPE

Manufacturer: Nichia Corporation

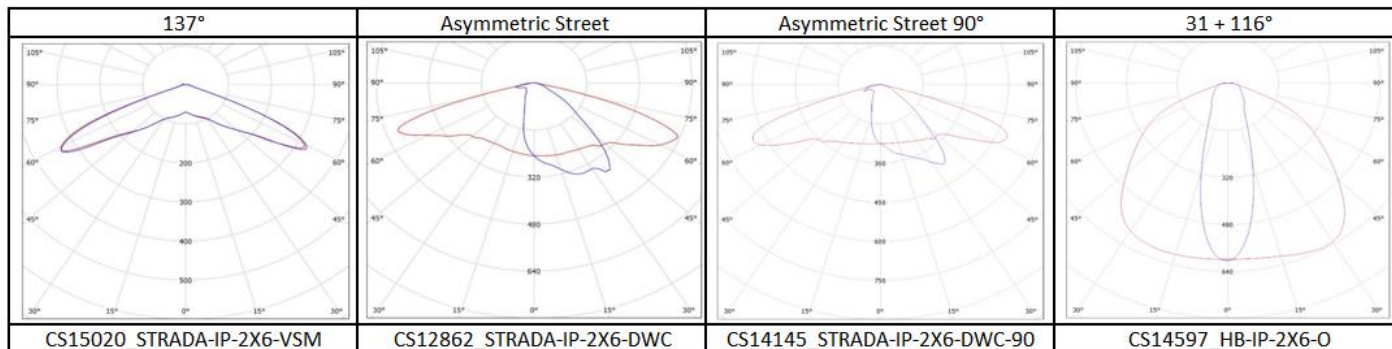
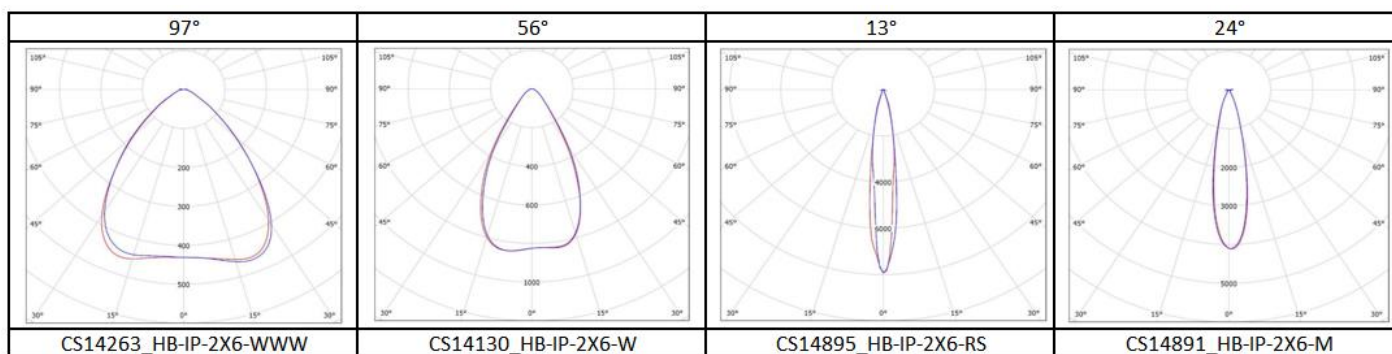
LED Series: 757

MECHANICAL DRAWING



Unit: mm

COMPATIBLE OPTICS



WIRING

Specification item	Value	Unit	Condition
Input wire cross- section	0.25...0.75 18...24	mm ² AWG	Solid wire
Input wire strip length	7.5...8.5	mm	Solid wire
Input wire cross-section	0.33...0.5 20...22	mm ² AWG	Stranded wire
Input wire strip length	7.5...8.5	mm	Stranded wire