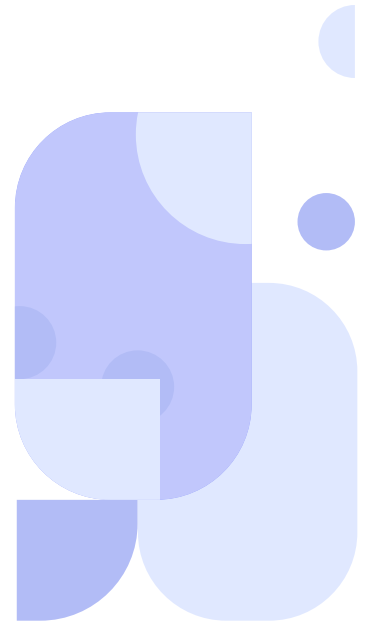
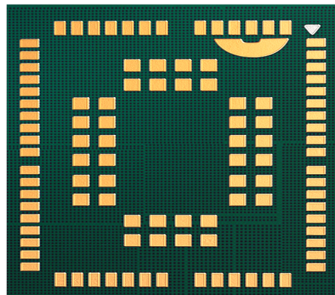


# C17QS



Cavli  
C Series



## Overview

Cavli C17QS modules use their LTE Cat 1bis technology and optional GNSS tracking capabilities to simplify global connectivity and tracking solutions. Coming with an optional iSIM Support <sup>3</sup>, WiFi Scanning support and Cavli Hubble device management platform <sup>3</sup>, C17QS is capable of elevating remote management solutions for seamless global deployment. The module comes in World wide variant which can be deployed according to customer requirements. The C17QS series, with its power saving and DRx/eDRx modes, ensure prolonged life cycles in both battery powered and externally powered usecases.

The above-mentioned features along with its small form-factor and interfacing capabilities ensure simpler designs and makes C17QS ideal for solutions that require great connectivity, tracking capabilities for designs that have space and power constraints. The C17QS Module is available in 7 variants such for regional deployments in Europe, Asia & Japan, Europe only, Australia & New Zealand, Latin America, India, North America along with a Worldwide variant for seamless global deployments.

## Key Highlights



LTE Cat 1bis



Integrated GNSS



iSIM Support <sup>3</sup>



Cavli Hubble  
Platform <sup>3</sup>



FreeRTOS



Power Saving  
Modes



WiFi Scanning  
Available



Small Form  
Factor Design



USB 2.0  
Interface



Open SDK  
Available



# Basic Module Information

## Basic Specification

Processor: ARM Cortex M3 processor @ 306MHz clock	
RAM:	2MB
Flash:	8MB
OS:	FreeRTOS with SDK

## Radio Technology

RAT Used:	Cat 1bis
3GPP Release:	14

## LTE Bands

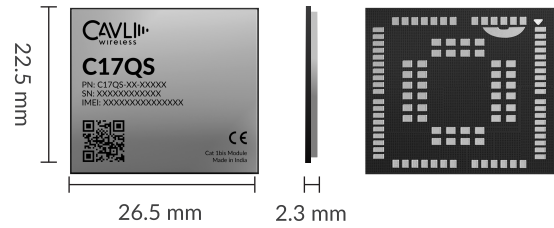
EAJ:	1/ 3/ 5/ 7/ 8/ 18/ 19/ 20/ 26/ 28/ 38/ 40/ 41
EU:	1/3/7/8/20/28
NA:	2/4/5/12/13/14/25/34/66/ B71 (optional)
LA:	1/2/3/4/5/7/8
AN:	1/3/5/8/18/19/26/28
IN:	1/3/5/8/40/41
WW:	1/ 2/ 3/ 4/ 5/ 7/ 8/ 12/ 13/ 14/ 18/ 19/ 20/ 25/ 26/ 28/ 34/ 38/ 39/ 40/ 41/ 66/ B71 (optional)

## Interfaces

UART	x3
USB 2.0	x1
GNSS UART <sup>2</sup>	x1
SWD	x1
Network Status Indicator	x1
Power ON Status Indicator	x1
ADC <sup>2</sup>	x2
I2S <sup>2</sup>	x1
I2C <sup>1</sup>	x1
SPI <sup>2</sup>	x1
GPIO <sup>1</sup>	x4
Main ANT	x1
GNSS ANT <sup>2</sup>	x1
USIM (1.8v/3.0v)	x1

<sup>1</sup> Optional

<sup>2</sup> Needs SDK



## Packaging

Form Factor:	LGA
Dimensions:	26.5 x 22.5 x 2.3 (mm scale)
Pin Count:	102 Pins
Weight:	3.3g

## Network Speed (Peak values)

Cat 1bis:	DL 10Mbps & UL 5Mbps
-----------	----------------------

## Internet Protocols

TCP(S), HTTP(S), FTP(S), MQTT(S), UDP, PPP
--

## Constellation Coverage

GPS, GLONASS, Galileo, NavIC, BDS, SBAS and QZSS Capable
--

## Temperature Range

Operating Temperature: -40°C to +85°C
---------------------------------------

## Power Characteristics

Voltage Range:	TBD
Typical Voltage:	3.8V

## Applicable Region

Eurasia & Japan, Europe only, Australia & New Zealand, Latin America, India, North America, World Wide
--