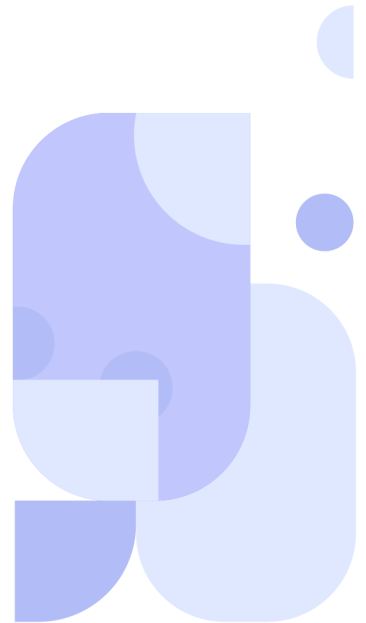
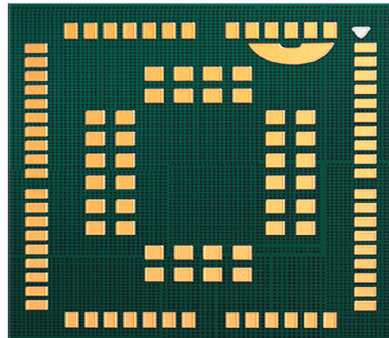


C11QM



Cavli
C Series



Overview

C11QM is the series of LTE Cat 1 modules with 2G fall back supporting 3GPP E-UTRA release 10 designed for IoT and M2M applications. It delivers a maximum data rate of 10 Mbit/s DL & 5 Mbit/s UL. It has a compact LGA form factor which is pin compatible with C17QS Cat 1bis module which allows flexible migration. C11QM supports in-built GNSS with Qualcomm® Location Suite Gen8C engine (GPS, GLONASS, BeiDou/Compass, Galileo and QZSS), for precise and dependable positioning. C11QM supports VoLTE and SMS over IMS/SG/CS and supports wide set Internet protocols and industry-standard interfaces.

Key Highlights



LTE Cat 1



In-built GNSS



2G Fallback



USB 2.0
Interface



ThreadX OS



VoLTE
Support



SMS over
IMS/SG/CS



Yocto Linux



Small Form
Factor Design

Basic Module Information

Basic Specification

Processor:	ARM Cortex-A7 @ Speed upto 1.3 GHz
RAM:	128/256 MB
Flash:	128/256/512 MB
OS:	ThreadX / Yocto Linux OS

Radio Technology

RAT Used:	LTE Cat 1 with 2G Fallback
3GPP Release:	10

LTE/GSM Band List

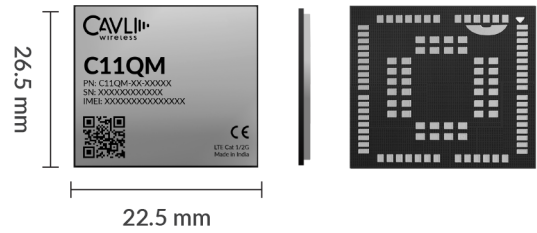
IN	B1/ B3/ B5/ B8/ B40/ B41
GSM:	900 /1800 MHz

Internet Protocols

TCP(S), HTTP(S), MQTT(S), FTP(S), UDP, PPP

Interfaces

ADC	x2
USB 2.0	x1
GPIO	x4
SDC	x1
PCM	x1
SPI	x1
UART	x4
Network Status Indicator	x1
Power ON Status Indicator	x1
SDIO 3.0	x1
Main ANT	x1
GNSS ANT	x1



Packaging

Form Factor:	LGA
Dimensions:	26.5 x 22.5 x TBD (mm scale)
Pin Count:	102 Pins
Weight:	TBD

Network Speed (Peak Values)

Cat 1:	DL 10Mbps & UL 5 Mbps
GSM:	DL 236.8Kbps & UL 236.8 Kbps

Constellation Coverage

GPS/GLO/GAL/BDS with QZSS
Qualcomm Location Suite Gen 8C Lite
TTFF : 29 Sec

Temperature Range

Operating Temperature:	-30 °C to 85 °C ⁴
------------------------	------------------------------

Power Characteristics

Voltage Range:	3.6 V to 4.5 V
Typical Voltage:	3.8 V

Applicable Region(s)

INDIA

⁴Needs SDK

This document is a pre-release version. Some technical specifications may be subjected to change.