

## DETAILS

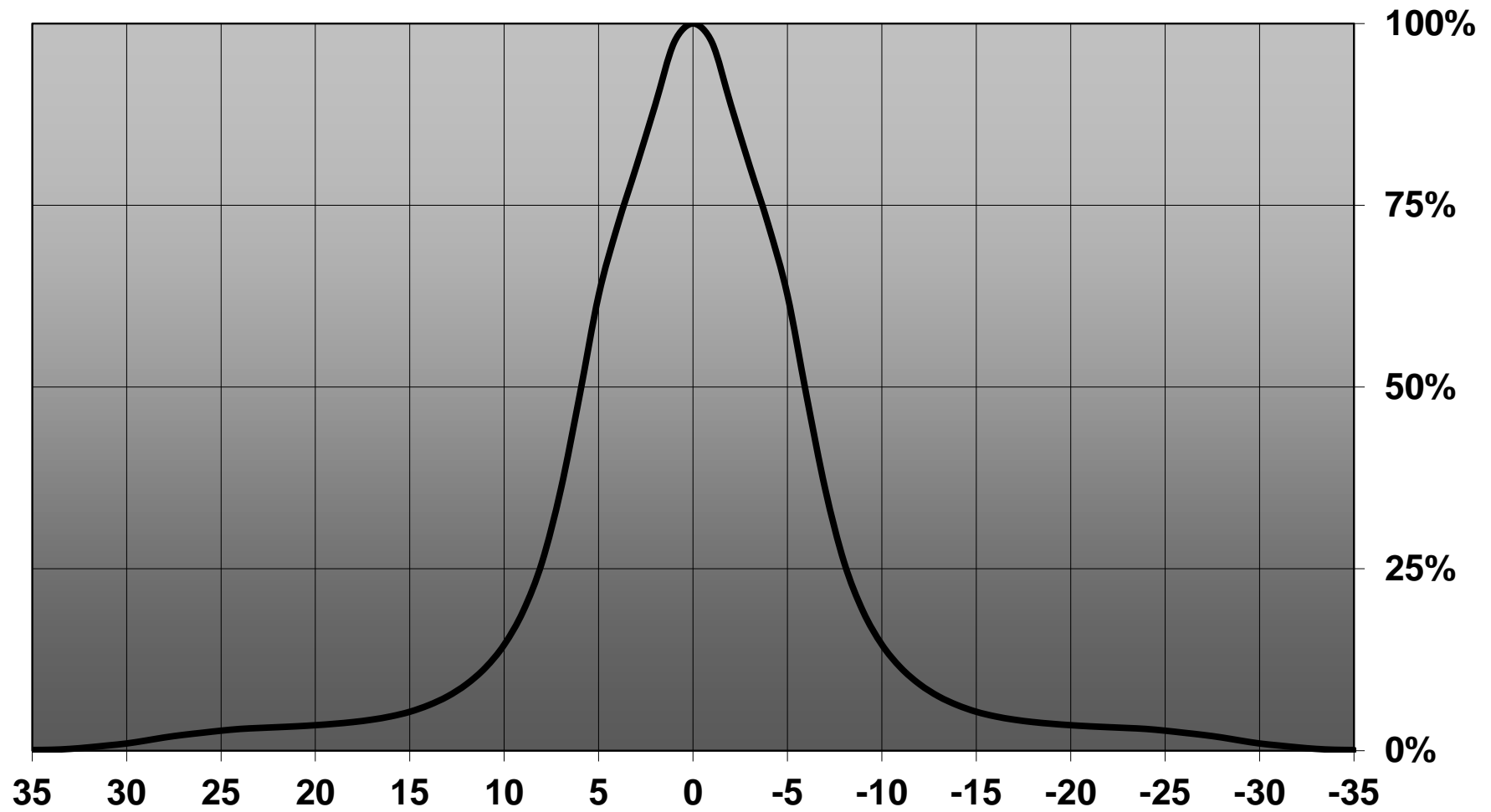
Product Number	CN12712_LENA-S
Family	Lena
Type	RefPack
Color	metal
Diameter	111 mm
Height	85,4 mm
Style	round
Optic Material	PC
Holder Material	PC
Fastening	screw
Status	production ready
ROHS Compliant	Yes
Date Updated	16/02/2015

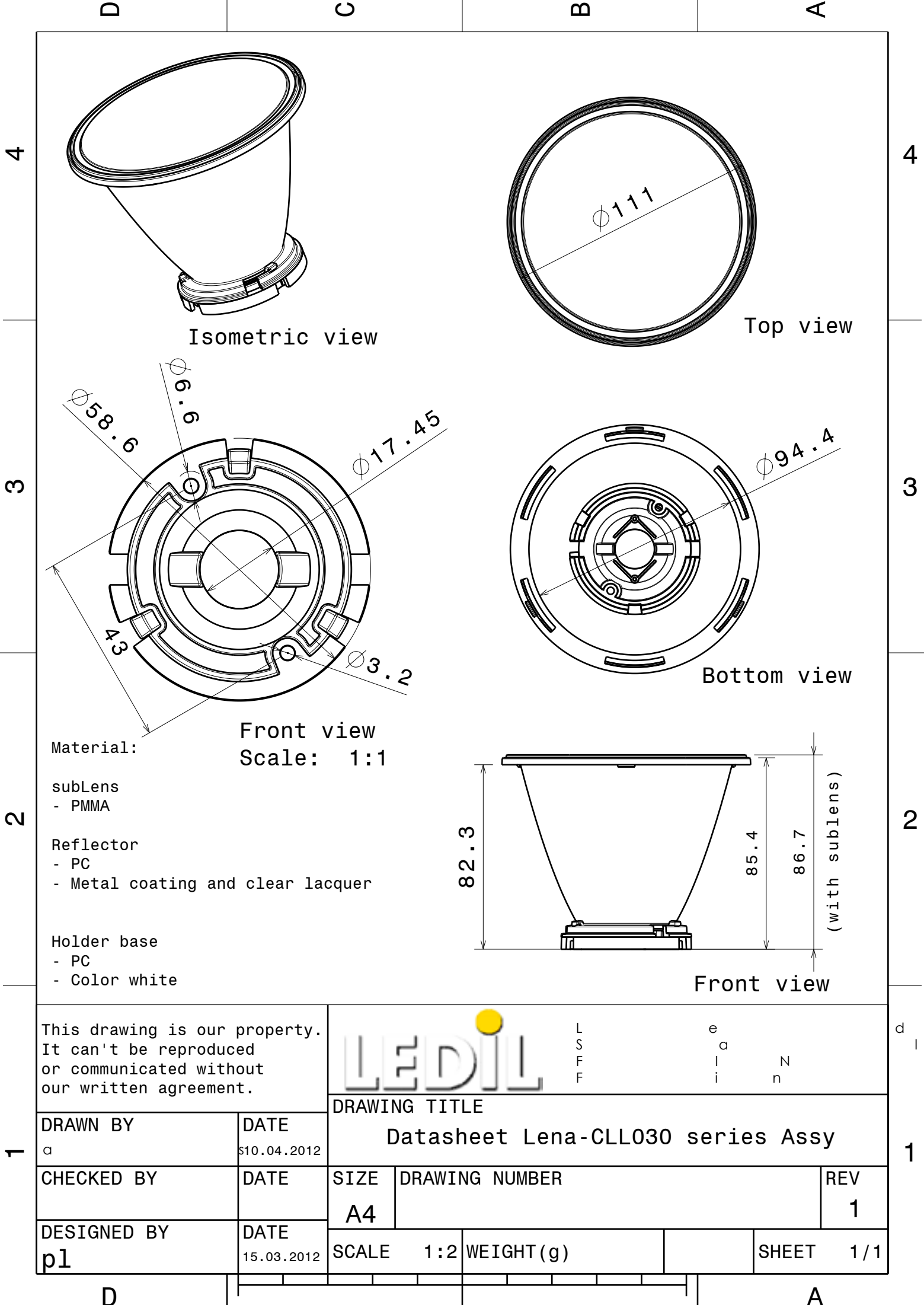
## OPTICAL PROPERTIES

LED	Viewing	Light	Efficiency	cd/lm	Connector
	Angle	Beam			
CLU710	7 deg	Spot	90 %	30.000	-
CLU720	9 deg	Spot	85 %	18.700	-
CLL03x/CLU03x	11 deg	Spot	85 %	13.000	-
SLE G5 LES15	11 deg	Spot	87 %	14.100	LEDiL: LEDiL



**Relative intensity of CN12712\_LENA-S (CLL030-1208)**





This drawing is our property.  
It can't be reproduced  
or communicated without  
our written agreement.



L  
S  
F  
F

e  
a  
i  
n

d  
i

DRAWING TITLE

Datasheet Lena-CLL030 series Assy

DRAWN BY

DATE

10.04.2012

CHECKED BY

DATE

SIZE

DRAWING NUMBER

REV

A4

1

DESIGNED BY

DATE

15.03.2012

SCALE

1:2

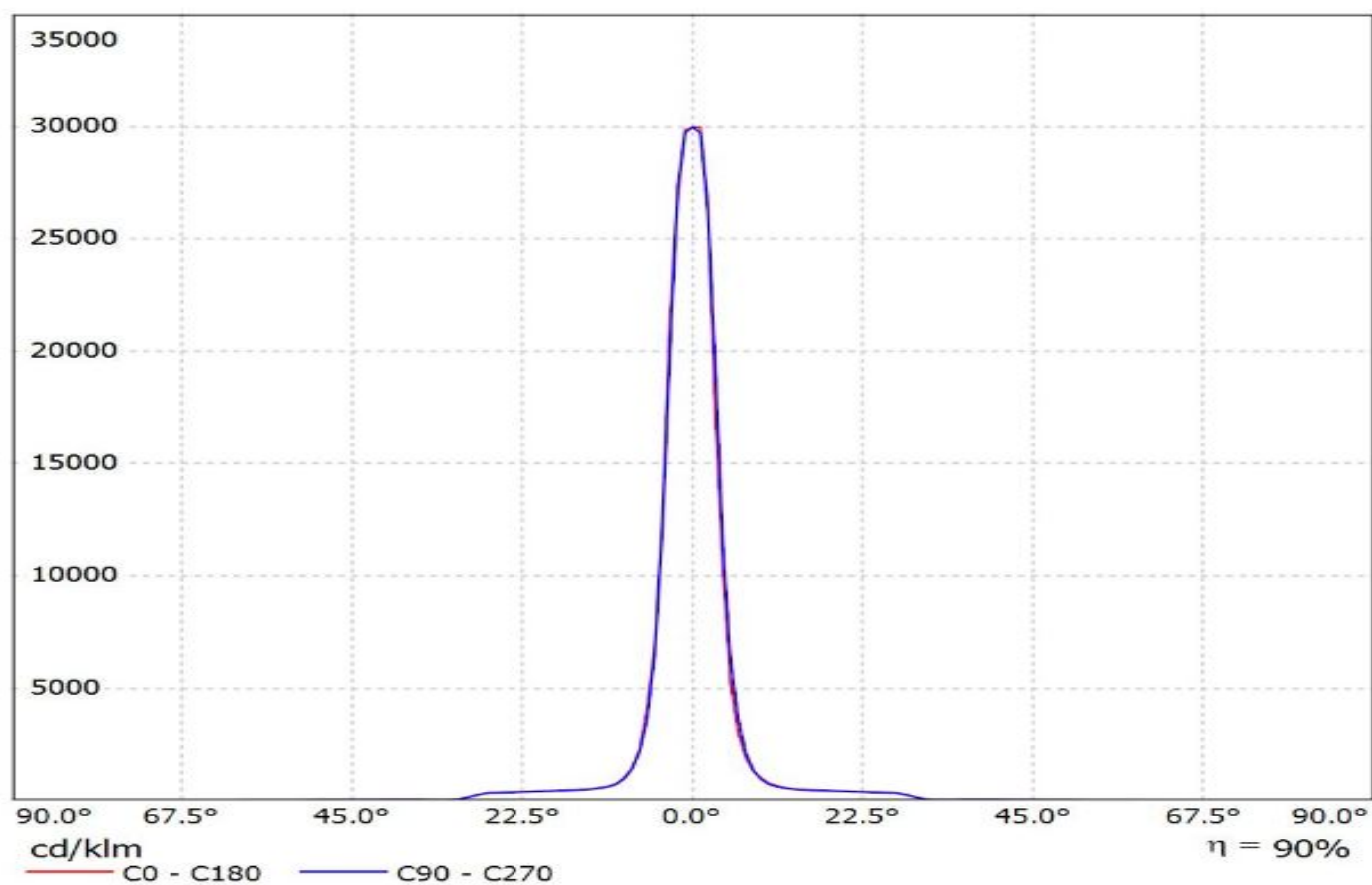
WEIGHT (g)

SHEET

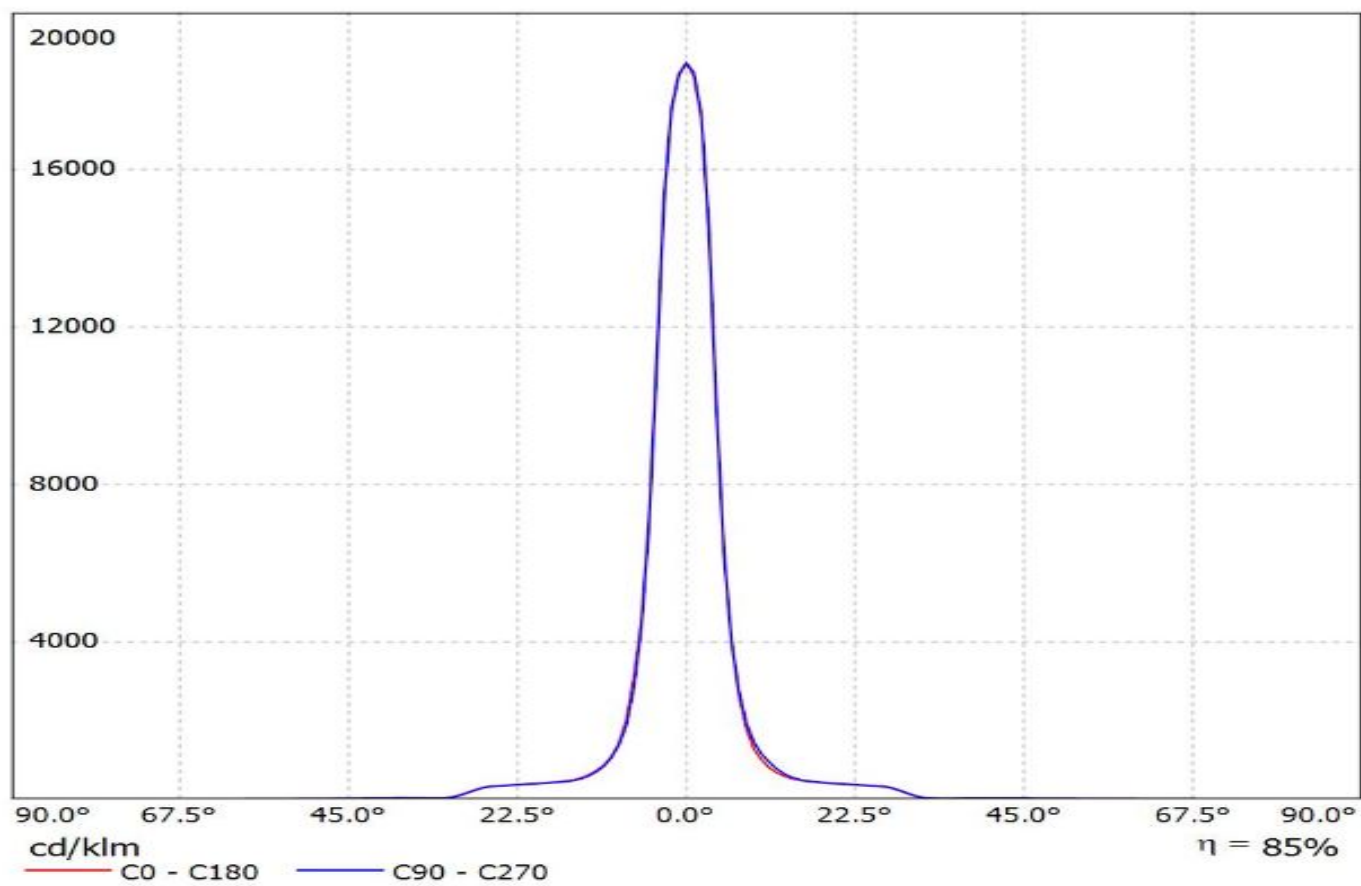
1/1

pl

Luminaire: Ledil CN12712\_LENA-S\_(CITIZEN\_CLU710)  
Lamps: 1 x CITIZEN\_CLU710\_(C12691\_LENA-STD-BASE-CLL030)  
\_1194.84lm@250mA\_P=8.35W\_I=0.25A

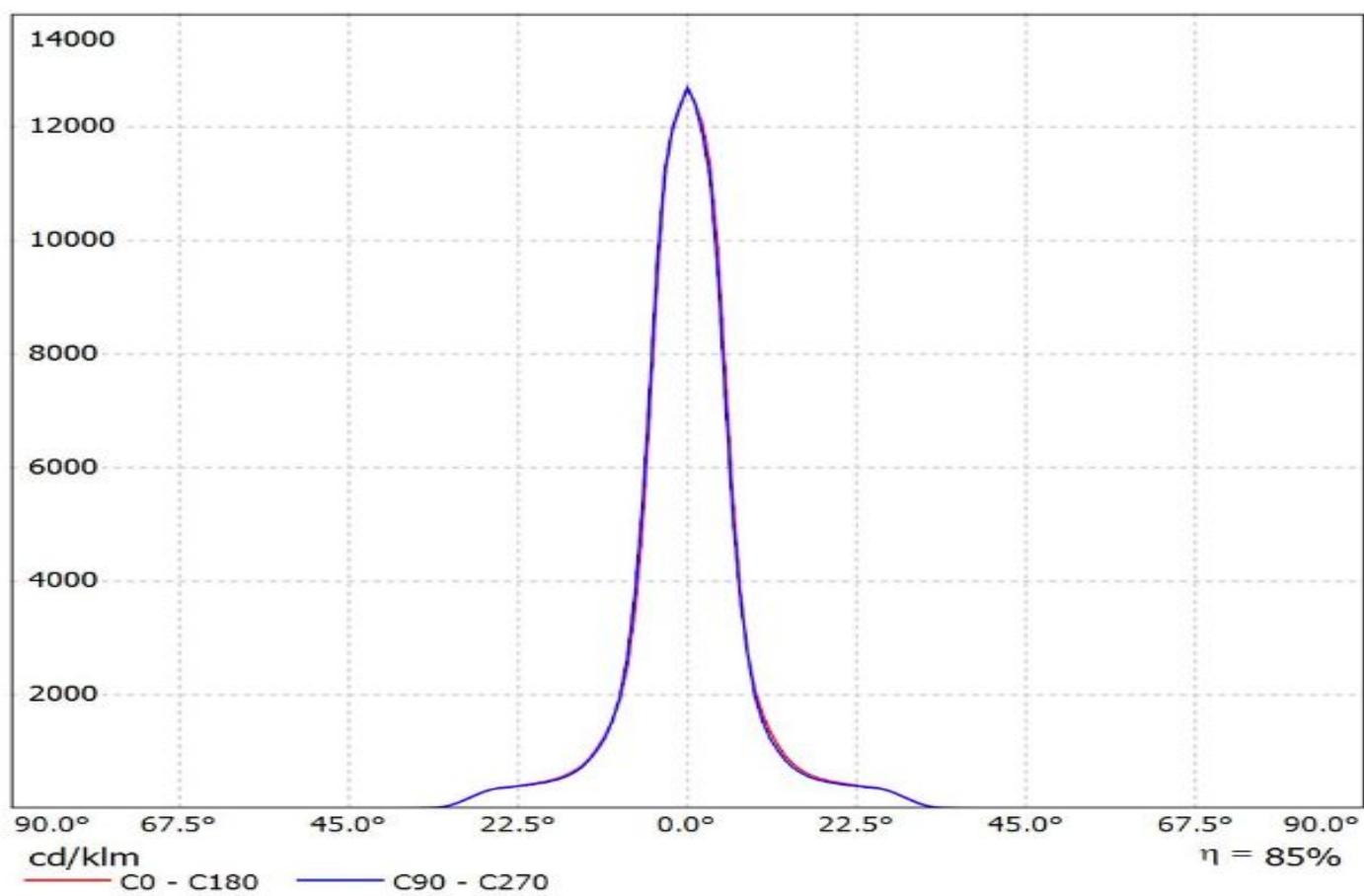


Luminaire: Ledil CN12712\_LENA-S\_(CLU720)  
Lamps: 1 x CITIZEN\_CLU720\_(CLU720-1206B8-273M2)  
\_1312.67lm@250mA\_CCT=2700K\_P=8.35W\_I=0.25A

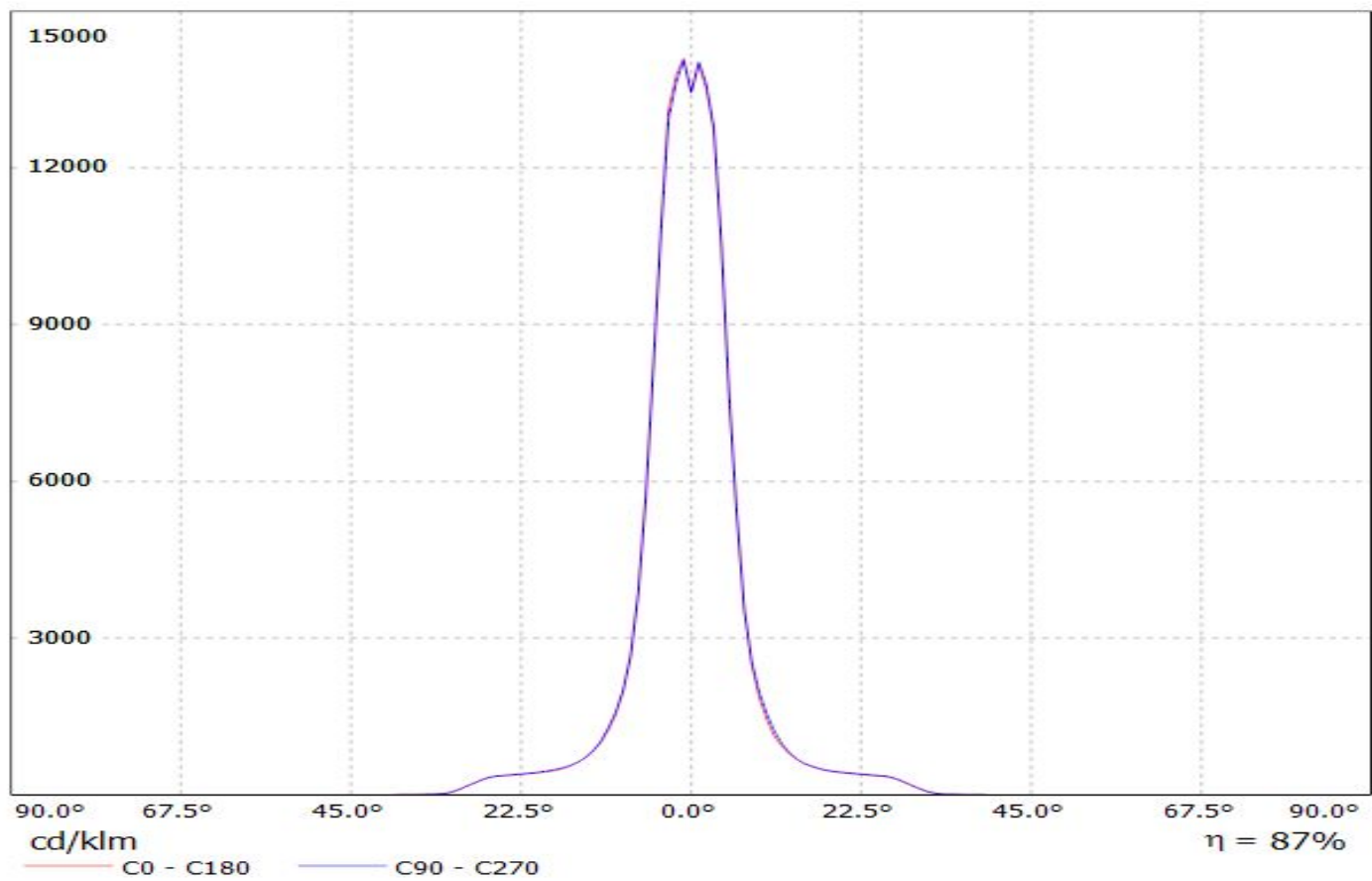


Luminaire: Ledil CN12712\_LENA-S\_(CLU036)

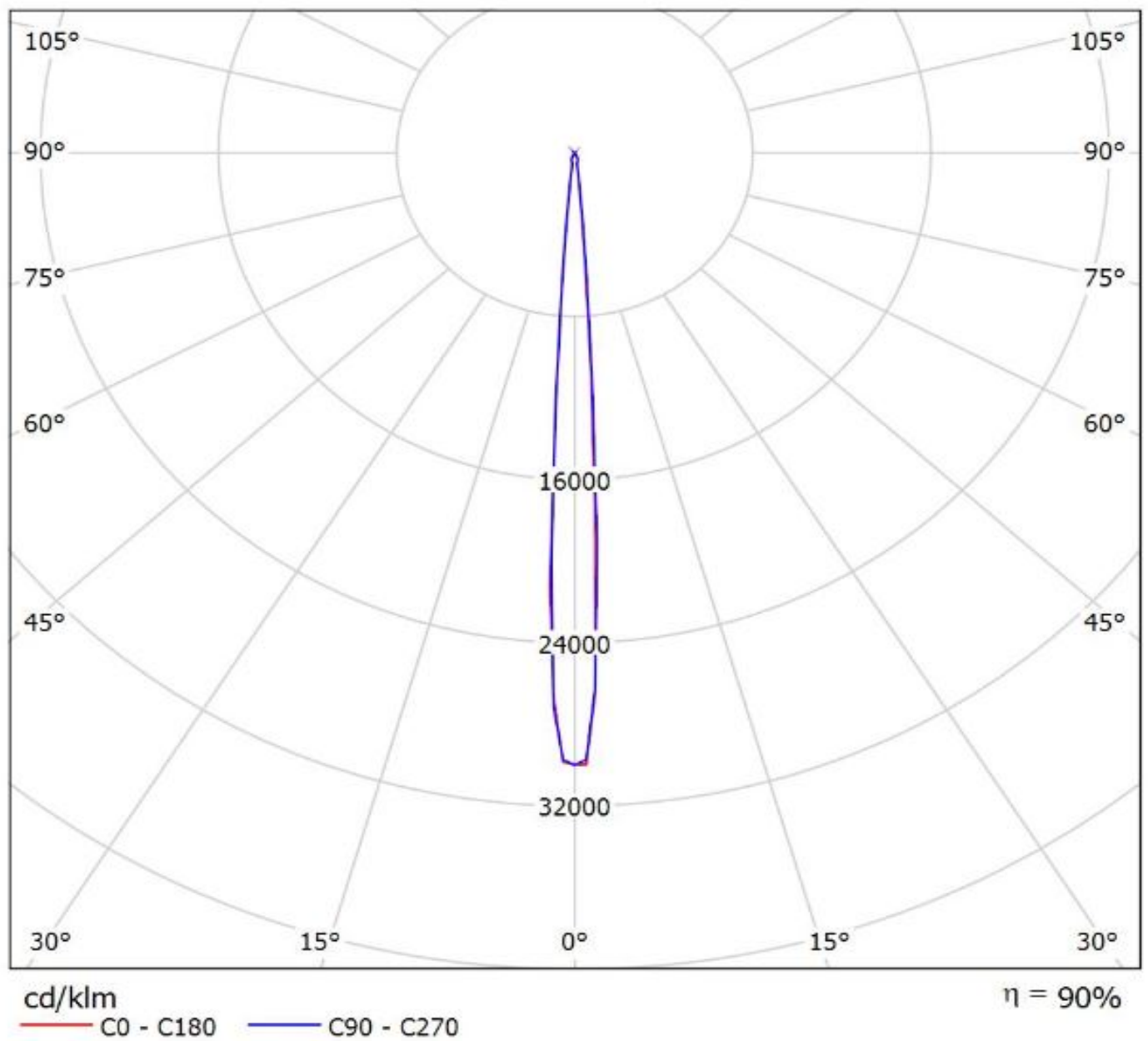
Lamps: 1 x CLU036\_(-1208C1-303M2G2)\_1273.68lm@250mA\_P=8.24W\_I=0.25A



Luminaire: LEDiL Oy CN12712\_LENA-S (SLE-G5\_LES-15)  
Lamps: 1 x Tridonic\_SLE-G5\_LES-15\_1237.76lm@250mA\_P=8.6698W\_I=0.250A

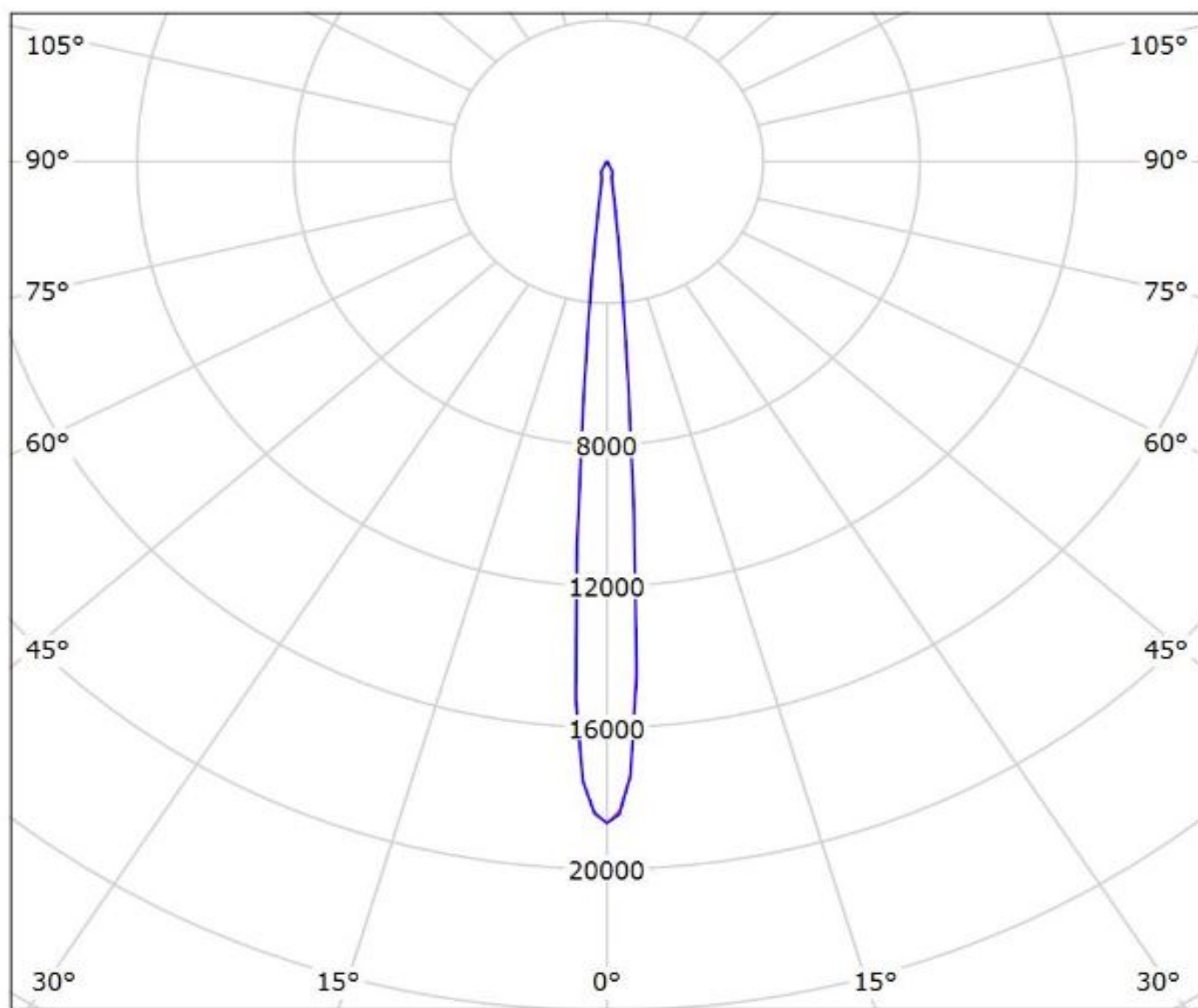


Luminaire: Ledil CN12712\_LENA-S\_(CITIZEN\_CLU710)  
Lamps: 1 x CITIZEN\_CLU710\_(C12691\_LENA-STD-BASE-CLL030)  
\_1194.84lm@250mA\_P=8.35W\_I=0.25A





Luminaire: Ledil CN12712\_LENA-S\_(CLU720)  
Lamps: 1 x CITIZEN\_CLU720\_(CLU720-1206B8-273M2)  
\_1312.67lm@250mA\_CCT=2700K\_P=8.35W\_I=0.25A



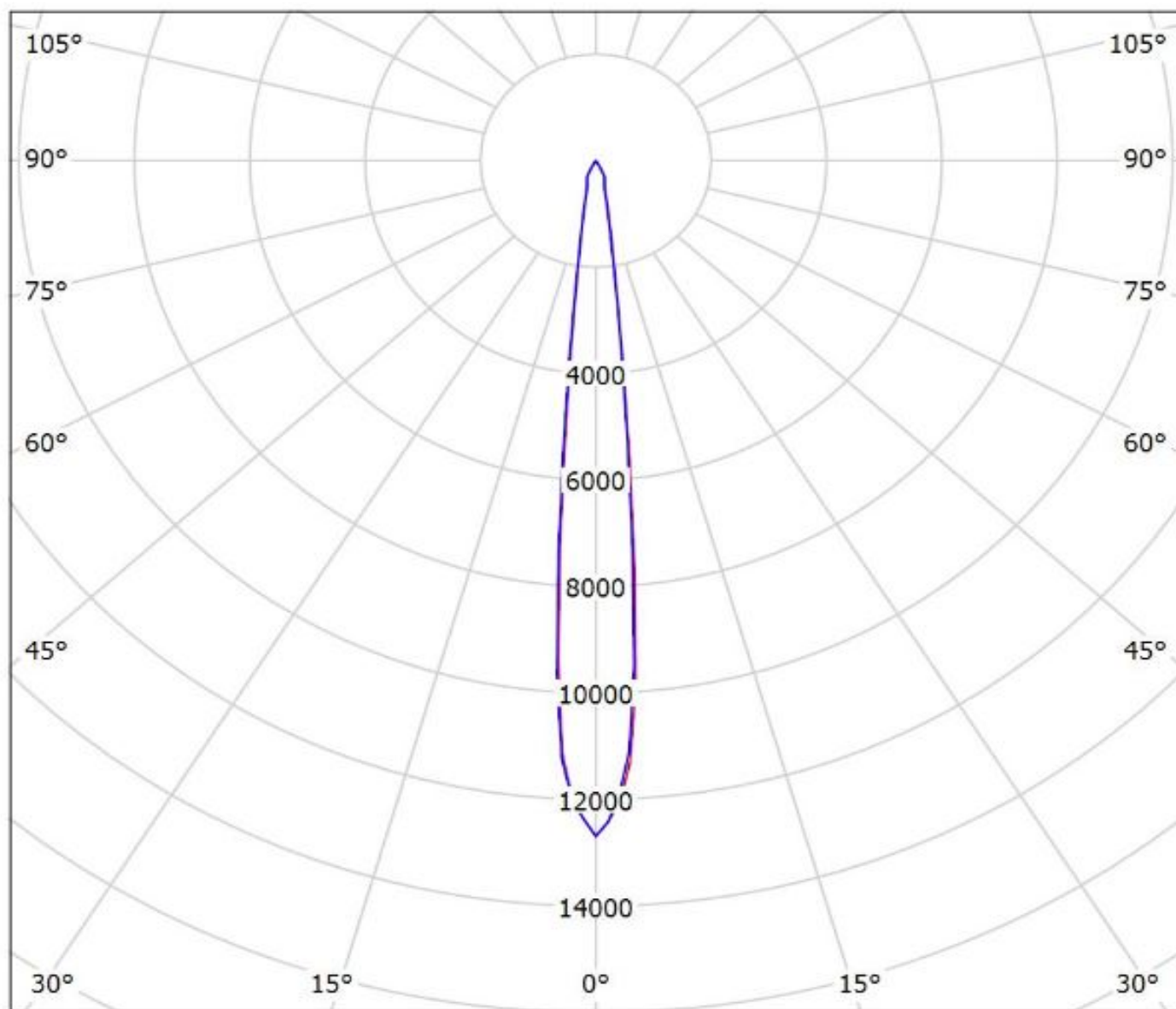
cd/klm

— C0 - C180 — C90 - C270

$\eta = 85\%$

Luminaire: Ledil CN12712\_LENA-S\_(CLU036)

Lamps: 1 x CLU036\_(-1208C1-303M2G2)\_1273.68lm@250mA\_P=8.24W\_I=0.25A



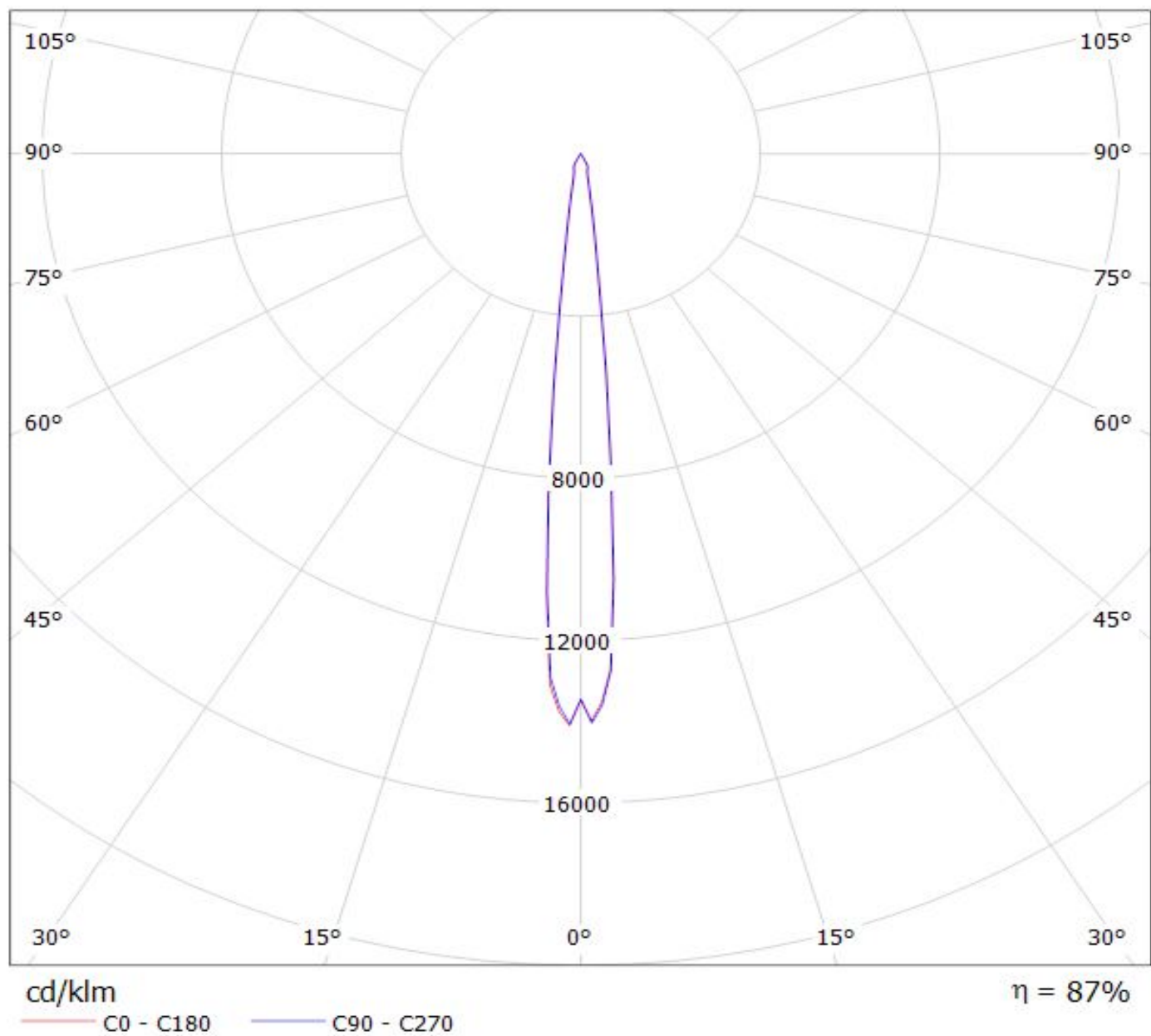
cd/klm

— C0 - C180

— C90 - C270

$\eta = 85\%$

Luminaire: LEDiL Oy CN12712\_LENA-S\_(SLE-G5\_LES-15)  
Lamps: 1 x Tridonic\_SLE-G5\_LES-15\_1237.76lm@250mA\_P=8.6698W\_I=0.250A



**NOTE: The typical divergence will be changed by different color, chip size and chip position tolerance. The typical total divergence is the full angle measured where the luminous intensity is half of the peak value.**

#### **GENERAL INFORMATION**

- Product series especially designed & optimized for series of LEDs.
- Special care taken to make light distribution as uniform as possible.

Note! Due to use of high power COB's with this product, special attention to proper thermal design is highly recommended. LEDiL has no liability for direct, indirect or consecutive damages arising from the LEDiL products being used outside of the recommended temperature range.